

PAINTER'S TAPES

CF 120



**FROGTAPE® MULTI-SURFACE
MEDIUM ADHESION
RUBBER-BASED ADHESIVE
EXCLUSIVE PAINTBLOCK® TECHNOLOGY**

TENSILE (LBS/IN WIDTH)	22
ADHESION TO STAINLESS STEEL (OZ/IN WIDTH)	30
THICKNESS (MILS)	5.7
ELONGATION (%)	10
MAXIMUM SERVICE TEMPERATURE (°F)	-
APPLICABLE STANDARDS*	15

For interior or exterior use on multiple surfaces, including cured painted walls, wood trim, glass and metal; Withstands direct sunlight for up to 7 days.



CF 160



**FROGTAPE® DELICATE SURFACE
LOW ADHESION
ACRYLIC-BASED ADHESIVE
EXCLUSIVE PAINTBLOCK® TECHNOLOGY**

TENSILE (LBS/IN WIDTH)	23
ADHESION TO STAINLESS STEEL (OZ/IN WIDTH)	14
THICKNESS (MILS)	3.6
ELONGATION (%)	4.5
MAXIMUM SERVICE TEMPERATURE (°F)	-
APPLICABLE STANDARDS*	-

For interior use on freshly painted surfaces (24 hours old), faux finishes, primed wallboard and wallpaper.



CP 27®



**PREMIUM GRADE, SHURRELEASE®
MEDIUM ADHESION
SYNTHETIC RUBBER-BASED ADHESIVE**

TENSILE (LBS/IN WIDTH)	27
ADHESION TO STAINLESS STEEL (OZ/IN WIDTH)	32
THICKNESS (MILS)	5.6
ELONGATION (%)	8
MAXIMUM SERVICE TEMPERATURE (°F)	200
APPLICABLE STANDARDS*	-

For interior and exterior use on multiple surfaces, including painted walls, glass, vinyl, metal and wood; Not recommended for use on wallpaper, unpainted wallboard, ceiling tile or with uncured coatings.



CP 150



**PAINTER'S MATE GREEN®
MEDIUM ADHESION
RUBBER-BASED ADHESIVE**

TENSILE (LBS/IN WIDTH)	15
ADHESION TO STAINLESS STEEL (OZ/IN WIDTH)	32
THICKNESS (MILS)	5.4
ELONGATION (%)	12
MAXIMUM SERVICE TEMPERATURE (°F)	150
APPLICABLE STANDARDS*	15

For interior use on painted walls, woodwork, glass, metal and vinyl.



CP 60®



**PREMIUM GRADE, RAZOREDGE®
LOW ADHESION
ACRYLIC-BASED ADHESIVE**

TENSILE (LBS/IN WIDTH)	23
ADHESION TO STAINLESS STEEL (OZ/IN WIDTH)	14
THICKNESS (MILS)	3.6
ELONGATION (%)	4.5
MAXIMUM SERVICE TEMPERATURE (°F)	-
APPLICABLE STANDARDS*	-

For painting stripes, diamonds and other patterns on walls; For interior use on delicate surfaces such as painted drywall and faux finishes.



PAINTER'S TAPES

COL 00



**PREMIUM GRADE, COLONIAL®
HIGH ADHESION
RUBBER-BASED ADHESIVE**

TENSILE (LBS/IN WIDTH)	24
ADHESION TO STAINLESS STEEL (OZ/IN WIDTH)	39
THICKNESS (MILS)	6.4
ELONGATION (%)	9
MAXIMUM SERVICE TEMPERATURE (°F)	200
APPLICABLE STANDARDS*	15

For industrial and automotive paint applications that do not require the use of a bake oven; Can also be used for general purpose masking applications that demand a premium performance tape.

CP 66®



**CONTRACTOR GRADE
HIGH ADHESION
RUBBER-BASED ADHESIVE**

TENSILE (LBS/IN WIDTH)	23
ADHESION TO STAINLESS STEEL (OZ/IN WIDTH)	38
THICKNESS (MILS)	5.4
ELONGATION (%)	10
MAXIMUM SERVICE TEMPERATURE (°F)	150
APPLICABLE STANDARDS*	15

For residential and commercial painting and construction, industrial masking, holding and packaging; Use in applications that demand quick stick and conformability to irregularly shaped surfaces.

CP 102



**INDUSTRIAL GRADE
MEDIUM-HIGH ADHESION
RUBBER-BASED ADHESIVE**

TENSILE (LBS/IN WIDTH)	19
ADHESION TO STAINLESS STEEL (OZ/IN WIDTH)	32
THICKNESS (MILS)	5.4
ELONGATION (%)	9
MAXIMUM SERVICE TEMPERATURE (°F)	200
APPLICABLE STANDARDS*	15

For the industrial, commercial and residential paint markets for use on vinyl, metal, glass, plastic and rubber.

CP 107



**INDUSTRIAL GRADE
MEDIUM-HIGH ADHESION
SYNTHETIC RUBBER-BASED ADHESIVE**

TENSILE (LBS/IN WIDTH)	19
ADHESION TO STAINLESS STEEL (OZ/IN WIDTH)	32
THICKNESS (MILS)	4.9
ELONGATION (%)	9
MAXIMUM SERVICE TEMPERATURE (°F)	150
APPLICABLE STANDARDS*	15

For non-critical painting and industrial applications that demand good adhesion, quick stick and clean removal; Also used for general purpose packaging, bundling, holding, splicing and tabbing; For use on vinyl, glass, plastic and rubber.

GENERAL PURPOSE MASKING TAPES



**GENERAL PURPOSE GRADE
MEDIUM-HIGH ADHESION
SYNTHETIC RUBBER-BASED ADHESIVE**

TENSILE (LBS/IN WIDTH)	18
ADHESION TO STAINLESS STEEL (OZ/IN WIDTH)	30
THICKNESS (MILS)	4.6
ELONGATION (%)	7
MAXIMUM SERVICE TEMPERATURE (°F)	150
APPLICABLE STANDARDS*	15

For non-critical bundling and labeling applications; Also used for general purpose packaging, holding and splicing applications for home, school and industry.



**GENERAL PURPOSE GRADE
MEDIUM-HIGH ADHESION
SYNTHETIC RUBBER-BASED ADHESIVE**

TENSILE (LBS/IN WIDTH)	19
ADHESION TO STAINLESS STEEL (OZ/IN WIDTH)	42
THICKNESS (MILS)	4.8
ELONGATION (%)	8
MAXIMUM SERVICE TEMPERATURE (°F)	150
APPLICABLE STANDARDS*	15

For packaging, bundling, holding, splicing, masking and labeling applications.



**GENERAL PURPOSE GRADE
MEDIUM-HIGH ADHESION
BLENDED RUBBER-BASED ADHESIVE**

TENSILE (LBS/IN WIDTH)	18
ADHESION TO STAINLESS STEEL (OZ/IN WIDTH)	35
THICKNESS (MILS)	4.9
ELONGATION (%)	9.5
MAXIMUM SERVICE TEMPERATURE (°F)	150
APPLICABLE STANDARDS*	15

For bundling, packaging, holding, splicing, masking and labeling for home, school and industry.



**UTILITY GRADE
HIGH ADHESION
SYNTHETIC RUBBER-BASED ADHESIVE**

TENSILE (LBS/IN WIDTH)	20
ADHESION TO STAINLESS STEEL (OZ/IN WIDTH)	49
THICKNESS (MILS)	5.0
ELONGATION (%)	8
MAXIMUM SERVICE TEMPERATURE (°F)	150
APPLICABLE STANDARDS*	15

For general purpose packaging, bundling, holding, splicing, tabbing and banding applications involving a variety of substrates; Not recommended for exacting industrial masking, spray painting or oven baking applications.



**GENERAL PURPOSE GRADE
MEDIUM-HIGH ADHESION
SYNTHETIC RUBBER-BASED ADHESIVE**

TENSILE (LBS/IN WIDTH)	20
ADHESION TO STAINLESS STEEL (OZ/IN WIDTH)	34
THICKNESS (MILS)	4.9
ELONGATION (%)	9
MAXIMUM SERVICE TEMPERATURE (°F)	150
APPLICABLE STANDARDS*	5, 15

For general purpose labeling, color-coding, decorating and identification; Can also be used for packaging, bundling, binding, holding, splicing and banding applications.



CP 105

PERFORMANCE MASKING TAPES



**HIGH PERFORMANCE GRADE
MODERATE TEMPERATURE
MEDIUM-HIGH ADHESION
RUBBER-BASED ADHESIVE**

TENSILE (LBS/IN WIDTH)	24
ADHESION TO STAINLESS STEEL (OZ/IN WIDTH)	34
THICKNESS (MILS)	5.7
ELONGATION (%)	10
MAXIMUM SERVICE TEMPERATURE (°F)	200
APPLICABLE STANDARDS*	15

For moderate temperature paint masking and metal fabrication applications in the transportation (auto, coaches, buses and marine) industry; Recommended for indoor use only.



**HIGH PERFORMANCE GRADE
MODERATE TEMPERATURE
MEDIUM-HIGH ADHESION
RUBBER-BASED ADHESIVE**

TENSILE (LBS/IN WIDTH)	31
ADHESION TO STAINLESS STEEL (OZ/IN WIDTH)	37
THICKNESS (MILS)	6.9
ELONGATION (%)	10
MAXIMUM SERVICE TEMPERATURE (°F)	225
APPLICABLE STANDARDS*	15

For moderate temperature, demanding paint masking applications in the transportation (auto, coaches, buses and marine) and metal fabrication industries; Also used for wet sanding applications; Recommended for indoor use only.



**HIGH PERFORMANCE GRADE
HIGH TEMPERATURE
MEDIUM-HIGH ADHESION
RUBBER-BASED ADHESIVE**

TENSILE (LBS/IN WIDTH)	26
ADHESION TO STAINLESS STEEL (OZ/IN WIDTH)	43
THICKNESS (MILS)	5.8
ELONGATION (%)	9
MAXIMUM SERVICE TEMPERATURE (°F)	300
APPLICABLE STANDARDS*	15

For high temperature paint masking and metal fabrication applications in the transportation (auto, coaches, buses and marine) industry; Also used for wet sanding applications; Recommended for indoor use only.



**HIGH PERFORMANCE GRADE
HIGH TEMPERATURE
MEDIUM-HIGH ADHESION
RUBBER-BASED ADHESIVE**

TENSILE (LBS/IN WIDTH)	28
ADHESION TO STAINLESS STEEL (OZ/IN WIDTH)	37
THICKNESS (MILS)	6.6
ELONGATION (%)	11
MAXIMUM SERVICE TEMPERATURE (°F)	325
APPLICABLE STANDARDS*	1, 15

For demanding, high temperature paint masking and metal fabrication applications in the transportation (auto, coaches, buses and marine) industry; Also used for metal preparation, painting, coating and gel coat masking; Recommended for indoor use only.



**HIGH PERFORMANCE GRADE
HIGH TEMPERATURE
MEDIUM-HIGH ADHESION
RUBBER-BASED ADHESIVE**

TENSILE (LBS/IN WIDTH)	25
ADHESION TO STAINLESS STEEL (OZ/IN WIDTH)	39
THICKNESS (MILS)	6.3
ELONGATION (%)	11
MAXIMUM SERVICE TEMPERATURE (°F)	350
APPLICABLE STANDARDS*	15

For high temperature, demanding industrial paint masking applications in the transportation (auto, coaches, buses and marine) and metal fabrication industries; Also used for EPDM rubber insulation protection; Recommended for indoor use only.



**HIGH PERFORMANCE GRADE
HIGH TEMPERATURE
EXCELLENT ADHESION
RUBBER-BASED ADHESIVE**

TENSILE (LBS/IN WIDTH)	24
ADHESION TO STAINLESS STEEL (OZ/IN WIDTH)	41
THICKNESS (MILS)	6.4
ELONGATION (%)	11
MAXIMUM SERVICE TEMPERATURE (°F)	350
APPLICABLE STANDARDS*	15

For high temperature - up to 350 F - paint masking and metal fabrication applications in the transportation (auto, coaches, buses and marine) industry; Recommended for indoor use only.

FLATBACK PAPER TAPES

FP 115



HIGH PERFORMANCE GRADE
REINFORCED FLATBACK PAPER
VERY HIGH ADHESION
SYNTHETIC RUBBER-BASED ADHESIVE

TENSILE (LBS/IN WIDTH)	40
ADHESION TO STAINLESS STEEL (OZ/IN WIDTH)	70
THICKNESS (MILS)	6.5
ELONGATION (%)	3
MAXIMUM SERVICE TEMPERATURE (°F)	120
APPLICABLE STANDARDS*	16

For industrial splicing, start-up, tabbing, shingling and overlapping applications; Effectively secures the paper to the core during roll start-up, holds the splice during processing and anchors the end of the roll securely.



FP 115

FP 97



GENERAL PURPOSE GRADE
KRAFT FLATBACK PAPER
VERY HIGH ADHESION
SYNTHETIC RUBBER-BASED ADHESIVE

TENSILE (LBS/IN WIDTH)	35
ADHESION TO STAINLESS STEEL (OZ/IN WIDTH)	110
THICKNESS (MILS)	6.0
ELONGATION (%)	6
MAXIMUM SERVICE TEMPERATURE (°F)	150
APPLICABLE STANDARDS*	16, 28, 29, 30, 31

For hand and machine carton sealing; Used for splicing various substrates; Also used for general purpose packaging, binding, holding, tabbing, reinforcing, banding, patching and floor seaming applications; FDA compliant.

FP 96



PACKAGING GRADE
KRAFT FLATBACK PAPER
VERY HIGH ADHESION
RUBBER-BASED ADHESIVE

TENSILE (LBS/IN WIDTH)	36
ADHESION TO STAINLESS STEEL (OZ/IN WIDTH)	90
THICKNESS (MILS)	6.1
ELONGATION (%)	6
MAXIMUM SERVICE TEMPERATURE (°F)	150
APPLICABLE STANDARDS*	16

For hand and machine carton sealing; Used for splicing various substrates; Also used for general purpose packaging, binding, holding, tabbing, reinforcing, banding and patching applications.

FP 202



PACKAGING PREMIUM GRADE
HEAVY DUTY, BLEACHED KRAFT PAPER
VERY HIGH ADHESION
RUBBER-BASED ADHESIVE

TENSILE (LBS/IN WIDTH)	55
ADHESION TO STAINLESS STEEL (OZ/IN WIDTH)	63
THICKNESS (MILS)	7.5
ELONGATION (%)	3
MAXIMUM SERVICE TEMPERATURE (°F)	180
APPLICABLE STANDARDS*	13, 16

For splicing various substrates; Used for heavy duty hand and machine carton sealing applications; Used for general purpose applications where a thick, flatback paper tape is required.

FLATBACK PAPER TAPES

FP 17



PRINTABLE, LOW TEMPERATURE
HIGH ADHESION
RUBBER-BASED ADHESIVE

TENSILE (LBS/IN WIDTH)	30
ADHESION TO STAINLESS STEEL (OZ/IN WIDTH)	52
THICKNESS (MILS)	5.4
ELONGATION (%)	3
MAXIMUM SERVICE TEMPERATURE (°F)	150
APPLICABLE STANDARDS*	16

For general purpose packaging, bundling, holding, binding, splicing, labeling, color-coding, banding, decorating and identification.

FP 227



PRINTABLE
HIGH ADHESION
RUBBER-BASED ADHESIVE

TENSILE (LBS/IN WIDTH)	30
ADHESION TO STAINLESS STEEL (OZ/IN WIDTH)	57
THICKNESS (MILS)	5.8
ELONGATION (%)	2.5
MAXIMUM SERVICE TEMPERATURE (°F)	150
APPLICABLE STANDARDS*	5, 16

For full-web flexographic printing equipment or hand-labeling applications.

FP 726



PRINTABLE, HIGH-STRENGTH
HIGH ADHESION
RUBBER-BASED ADHESIVE

TENSILE (LBS/IN WIDTH)	45
ADHESION TO STAINLESS STEEL (OZ/IN WIDTH)	72
THICKNESS (MILS)	6.6
ELONGATION (%)	3
MAXIMUM SERVICE TEMPERATURE (°F)	150
APPLICABLE STANDARDS*	5, 16

For identification labeling, color-coding, packaging closure and other applications where printing is necessary.

**Fluorescent colors do not conform to ASTM D-4236



SPECIALTY TAPES

CP 743



SPECIALTY GRADE
PHOTOGRAPHIC BLACK
VERY HIGH ADHESION
RUBBER-BASED ADHESIVE

TENSILE (LBS/IN WIDTH)	24
ADHESION TO STAINLESS STEEL (OZ/IN WIDTH)	47
THICKNESS (MILS)	6.5
ELONGATION (%)	8
MAXIMUM SERVICE TEMPERATURE (°F)	150
APPLICABLE STANDARDS*	15

For use in photo studios, film processing labs and home darkrooms; Recommended for use as a chart tape; Used for quality photographic reproduction work, including cropping and edging negatives for contact printing; Also used for sealing camera bellows and film holders against light leaks.

CP 327



PREMIUM GRADE
MULTI-SURFACE CONTAINMENT TAPE
EXCELLENT ADHESION
SYNTHETIC RUBBER-BASED ADHESIVE

TENSILE (LBS/IN WIDTH)	27
ADHESION TO STAINLESS STEEL (OZ/IN WIDTH)	36
THICKNESS (MILS)	6.0
ELONGATION (%)	7.5
MAXIMUM SERVICE TEMPERATURE (°F)	200
APPLICABLE STANDARDS*	-

For building containments in restoration, remodeling, remediation and abatement jobs; Can be used on interior and exterior walls, glass, vinyl, metal and wood.



CP 327 & PC 608

HOT MELT TAPES



GENERAL PURPOSE GRADE
25 MICRON CAST BOPP FILM
SYNTHETIC HOT MELT ADHESIVE

TENSILE (LBS/IN WIDTH) (LONGITUDINAL)	21
ADHESION TO STAINLESS STEEL (OZ/IN WIDTH)	43
HOLDING POWER TO FIBERBOARD (MINUTES)	10,000
THICKNESS (MILS)	1.6
ELONGATION (%)	150
APPLICATION TEMPERATURE RANGE (°F)	35 - 110
SERVICE TEMPERATURE RANGE (°F)	-20 - 150
APPLICABLE STANDARDS*	21, 29, 32

For manual or automated industrial carton sealing of lightweight cartons with minimal exposure to handling, shipping and load stress.



PRODUCTION GRADE
30 MICRON CAST BOPP FILM
SYNTHETIC HOT MELT ADHESIVE

TENSILE (LBS/IN WIDTH) (LONGITUDINAL)	27
ADHESION TO STAINLESS STEEL (OZ/IN WIDTH)	44
HOLDING POWER TO FIBERBOARD (MINUTES)	15,000
THICKNESS (MILS)	1.9
ELONGATION (%)	150
APPLICATION TEMPERATURE RANGE (°F)	35 - 110
SERVICE TEMPERATURE RANGE (°F)	-20 - 150
APPLICABLE STANDARDS*	4, 21, 29, 32

For manual or automated industrial carton sealing of medium-weight cartons in normal manufacturing and shipping environments.



PERFORMANCE GRADE
35 MICRON CAST BOPP FILM
SYNTHETIC HOT MELT ADHESIVE

TENSILE (LBS/IN WIDTH) (LONGITUDINAL)	30
ADHESION TO STAINLESS STEEL (OZ/IN WIDTH)	47
HOLDING POWER TO FIBERBOARD (MINUTES)	20,000
THICKNESS (MILS)	2.2
ELONGATION (%)	150
APPLICATION TEMPERATURE RANGE (°F)	35 - 110
SERVICE TEMPERATURE RANGE (°F)	-20 - 150
APPLICABLE STANDARDS*	4, 21, 29, 32

For critical closure manual or automated industrial carton sealing of medium-weight cartons that are subjected to increased handling stress.



HIGH PERFORMANCE GRADE
40 MICRON CAST BOPP FILM
SYNTHETIC HOT MELT ADHESIVE

TENSILE (LBS/IN WIDTH) (LONGITUDINAL)	33
ADHESION TO STAINLESS STEEL (OZ/IN WIDTH)	54
HOLDING POWER TO FIBERBOARD (MINUTES)	25,000
THICKNESS (MILS)	2.5
ELONGATION (%)	150
APPLICATION TEMPERATURE RANGE (°F)	35 - 110
SERVICE TEMPERATURE RANGE (°F)	-20 - 150
APPLICABLE STANDARDS*	4, 11, 21, 29, 32

For manual or automated industrial carton sealing of large, bulky or heavy content cartons; For use in higher speed, critical closure applications; Can be used in moderate to severe handling environments.



HEAVY DUTY GRADE
50 MICRON CAST BOPP FILM
SYNTHETIC HOT MELT ADHESIVE

TENSILE (LBS/IN WIDTH) (LONGITUDINAL)	42
ADHESION TO STAINLESS STEEL (OZ/IN WIDTH)	58
HOLDING POWER TO FIBERBOARD (MINUTES)	30,000
THICKNESS (MILS)	3.0
ELONGATION (%)	150
APPLICATION TEMPERATURE RANGE (°F)	35 - 110
SERVICE TEMPERATURE RANGE (°F)	-20 - 150
APPLICABLE STANDARDS*	4, 11, 21, 29, 32

For manual or automated industrial carton sealing of heavy, bulky cartons, including overstuffed or under-filled cartons, in high stress and extreme handling conditions.



HEAVY DUTY GRADE
50 MICRON POLYESTER FILM
SYNTHETIC HOT MELT ADHESIVE

TENSILE (LBS/IN WIDTH) (LONGITUDINAL)	54
ADHESION TO STAINLESS STEEL (OZ/IN WIDTH)	95
HOLDING POWER TO FIBERBOARD (MINUTES)	35,000
THICKNESS (MILS)	3.4
ELONGATION (%)	130
APPLICATION TEMPERATURE RANGE (°F)	35 - 110
SERVICE TEMPERATURE RANGE (°F)	-20 - 150
APPLICABLE STANDARDS*	4, 9, 10, 21, 29, 33

For manual or automated industrial carton sealing of heavy duty, critical closure cartons, including military supplies, high-value electronic components and hazardous materials and chemicals.

SPECIALTY HOT MELT TAPES



COLD ENVIRONMENT
GENERAL PURPOSE GRADE
25 MICRON CAST BOPP FILM
SYNTHETIC HOT MELT ADHESIVE

TENSILE (LBS/IN WIDTH) (LONGITUDINAL)	21
ADHESION TO STAINLESS STEEL (OZ/IN WIDTH)	30
HOLDING POWER TO FIBERBOARD (MINUTES)	10,000
THICKNESS (MILS)	1.6
ELONGATION (%)	150
APPLICATION TEMPERATURE RANGE (°F)	20 - 75
SERVICE TEMPERATURE RANGE (°F)	-20 - 100
APPLICABLE STANDARDS*	21, 29, 32

For manual or automated industrial sealing of lightweight cartons in cold temperature environments such as food processing and packaging facilities, as well as in cold weather moving/storage and unheated warehouses.



COLD ENVIRONMENT
PRODUCTION GRADE
30 MICRON CAST BOPP FILM
SYNTHETIC HOT MELT ADHESIVE

TENSILE (LBS/IN WIDTH) (LONGITUDINAL)	27
ADHESION TO STAINLESS STEEL (OZ/IN WIDTH)	30
HOLDING POWER TO FIBERBOARD (MINUTES)	10,000
THICKNESS (MILS)	1.9
ELONGATION (%)	150
APPLICATION TEMPERATURE RANGE (°F)	20 - 75
SERVICE TEMPERATURE RANGE (°F)	-20 - 100
APPLICABLE STANDARDS*	21, 29, 32

For manual or automated industrial sealing of medium-weight cartons in cold temperature environments such as food processing and packaging facilities, as well as in cold weather moving/storage and unheated warehouses.



RECYCLED CARTONS
PRODUCTION GRADE
30 MICRON CAST BOPP FILM
SYNTHETIC HOT MELT ADHESIVE

TENSILE (LBS/IN WIDTH) (LONGITUDINAL)	27
ADHESION TO STAINLESS STEEL (OZ/IN WIDTH)	50
HOLDING POWER TO FIBERBOARD (MINUTES)	15,000
THICKNESS (MILS)	2.0
ELONGATION (%)	150
APPLICATION TEMPERATURE RANGE (°F)	35 - 110
SERVICE TEMPERATURE RANGE (°F)	-20 - 150
APPLICABLE STANDARDS*	4, 21, 29, 32

For manual and automated industrial sealing of medium-weight, highly recycled cartons, particularly 100 percent recycled.



FE-2 DISPENSER & HP 200®

PRINTED HOT MELT TAPES

HP 240



PRODUCTION GRADE STANDARD MESSAGE PRINT 30 MICRON CAST BOPP FILM SYNTHETIC HOT MELT ADHESIVE

TENSILE (LBS/IN WIDTH) (LONGITUDINAL)	27
ADHESION TO STAINLESS STEEL (OZ/IN WIDTH)	44
HOLDING POWER TO FIBERBOARD (MINUTES)	15,000
THICKNESS (MILS)	1.9
ELONGATION (%)	150
APPLICATION TEMPERATURE RANGE (°F)	35 - 110
SERVICE TEMPERATURE RANGE (°F)	-20 - 150
APPLICABLE STANDARDS*	4, 21, 29, 32

Printed with standard messages to prevent pilferage or inform handlers of care; For manual or automated industrial carton sealing of medium-weight cartons in normal manufacturing and shipping environments.

HP 250



PRODUCTION GRADE CUSTOM PRINT 30 MICRON CAST BOPP FILM SYNTHETIC HOT MELT ADHESIVE

TENSILE (LBS/IN WIDTH) (LONGITUDINAL)	27
ADHESION TO STAINLESS STEEL (OZ/IN WIDTH)	44
HOLDING POWER TO FIBERBOARD (MINUTES)	15,000
THICKNESS (MILS)	1.9
ELONGATION (%)	150
APPLICATION TEMPERATURE RANGE (°F)	35 - 110
SERVICE TEMPERATURE RANGE (°F)	-20 - 150
APPLICABLE STANDARDS*	4, 21, 29

Custom-printed to prevent pilferage and allow personalization of outgoing cartons; For manual or automated industrial carton sealing of medium-weight cartons in normal manufacturing and shipping environments.

PRINTABLE HOT MELT TAPES

HP 260



PRODUCTION GRADE 30 MICRON CAST BOPP FILM SYNTHETIC HOT MELT ADHESIVE

TENSILE (LBS/IN WIDTH) (LONGITUDINAL)	27
ADHESION TO STAINLESS STEEL (OZ/IN WIDTH)	44
HOLDING POWER TO FIBERBOARD (MINUTES)	15,000
THICKNESS (MILS)	1.9
ELONGATION (%)	150
APPLICATION TEMPERATURE RANGE (°F)	35 - 110
SERVICE TEMPERATURE RANGE (°F)	-20 - 150
APPLICABLE STANDARDS*	4, 21, 29, 32

For use on Siat L33, L36, L233 (or equivalent) surface printing presses; For manual sealing of medium-weight cartons in normal manufacturing and shipping environments; May also be used in automated industrial carton sealing applications.

HP 560



HEAVY DUTY GRADE 50 MICRON CAST BOPP FILM SYNTHETIC HOT MELT ADHESIVE

TENSILE (LBS/IN WIDTH) (LONGITUDINAL)	42
ADHESION TO STAINLESS STEEL (OZ/IN WIDTH)	58
HOLDING POWER TO FIBERBOARD (MINUTES)	30,000
THICKNESS (MILS)	3.0
ELONGATION (%)	150
APPLICATION TEMPERATURE RANGE (°F)	35 - 110
SERVICE TEMPERATURE RANGE (°F)	-20 - 150
APPLICABLE STANDARDS*	4, 11, 21

For use on Siat L33, L36, L233 (or equivalent) surface printing presses; For manual or automated industrial carton sealing of heavy, bulky cartons, including overstuffed or under-filled cartons, in high stress and extreme handling conditions.

HP 460



HIGH PERFORMANCE GRADE 40 MICRON CAST BOPP FILM SYNTHETIC HOT MELT ADHESIVE

TENSILE (LBS/IN WIDTH) (LONGITUDINAL)	33
ADHESION TO STAINLESS STEEL (OZ/IN WIDTH)	54
HOLDING POWER TO FIBERBOARD (MINUTES)	25,000
THICKNESS (MILS)	2.5
ELONGATION (%)	150
APPLICATION TEMPERATURE RANGE (°F)	35 - 110
SERVICE TEMPERATURE RANGE (°F)	-20 - 150
APPLICABLE STANDARDS*	4, 21

For use on Siat L33, L36, L233 (or equivalent) surface printing presses; For manual or automated industrial carton sealing of large, bulky or heavy content cartons; For use in higher speed, critical closure applications; For use in moderate to severe handling environments.

GS 496



PRODUCTION GRADE CAST BOPP FILM SYNTHETIC HOT MELT ADHESIVE FIBERGLASS REINFORCED

TENSILE (LBS/IN WIDTH)	100
ADHESION TO STAINLESS STEEL (OZ/IN WIDTH)	70
THICKNESS (MILS)	4.3
ELONGATION (%)	3.7
SERVICE TEMPERATURE RANGE (°F)	-10 - 150
APPLICABLE STANDARDS*	29, 32

For use on Siat L33, L36, L233 (or equivalent) surface printing presses; For general purpose strapping, packaging, bundling and palletizing applications.

WATER-BASED ACRYLIC TAPES

AP 101®



GENERAL PURPOSE GRADE 25 MICRON CAST BOPP FILM EMULSION ACRYLIC ADHESIVE

TENSILE (LBS/IN WIDTH)	20
ADHESION TO STAINLESS STEEL (OZ/IN WIDTH)	18
THICKNESS (MILS)	1.6
ELONGATION (%)	150
APPLICATION TEMPERATURE RANGE (°F)	20 - 110
SERVICE TEMPERATURE RANGE (°F)	-20 - 180
APPLICABLE STANDARDS*	29, 32

For non-critical closure of lightweight cartons in manual and automated industrial sealing settings.



AP 180®



PRODUCTION GRADE 25 MICRON CAST BOPP FILM EMULSION ACRYLIC ADHESIVE

TENSILE (LBS/IN WIDTH)	20
ADHESION TO STAINLESS STEEL (OZ/IN WIDTH)	21
THICKNESS (MILS)	1.8
ELONGATION (%)	150
APPLICATION TEMPERATURE RANGE (°F)	20 - 110
SERVICE TEMPERATURE RANGE (°F)	-20 - 180
APPLICABLE STANDARDS*	29, 32

For manual and automated industrial sealing of lightweight cartons.



AP 201®



PRODUCTION GRADE 28 MICRON CAST BOPP FILM EMULSION ACRYLIC ADHESIVE

TENSILE (LBS/IN WIDTH)	24
ADHESION TO STAINLESS STEEL (OZ/IN WIDTH)	22
THICKNESS (MILS)	2.0
ELONGATION (%)	150
APPLICATION TEMPERATURE RANGE (°F)	20 - 110
SERVICE TEMPERATURE RANGE (°F)	-20 - 180
APPLICABLE STANDARDS*	29, 32

For manual and automated industrial sealing of light- to medium-weight cartons.



AP 301®



PERFORMANCE GRADE 35 MICRON CAST BOPP FILM EMULSION ACRYLIC ADHESIVE

TENSILE (LBS/IN WIDTH)	27
ADHESION TO STAINLESS STEEL (OZ/IN WIDTH)	25
THICKNESS (MILS)	2.2
ELONGATION (%)	150
APPLICATION TEMPERATURE RANGE (°F)	20 - 110
SERVICE TEMPERATURE RANGE (°F)	-20 - 180
APPLICABLE STANDARDS*	29, 32

For manual and automated industrial sealing of medium-weight cartons in extreme temperature environments or subjected to handling stress.



AP 401®



HIGH PERFORMANCE GRADE 40 MICRON CAST BOPP FILM EMULSION ACRYLIC ADHESIVE

TENSILE (LBS/IN WIDTH)	30
ADHESION TO STAINLESS STEEL (OZ/IN WIDTH)	27
THICKNESS (MILS)	2.5
ELONGATION (%)	150
APPLICATION TEMPERATURE RANGE (°F)	20 - 110
SERVICE TEMPERATURE RANGE (°F)	-20 - 180
APPLICABLE STANDARDS*	29, 32

For heavy duty manual and automated industrial sealing of cartons exposed to rough handling and load stress; Also used for critical closure of bulky packages.



SD 932 DISPENSER &
AP SERIES

WATER ACTIVATED TAPES

GP 100



MEDIUM DUTY GRADE
NON-REINFORCED KRAFT PAPER
WATER ACTIVATED ADHESIVE

PAPER SHEET (LBS)	60
MD TENSILE (LBS/IN WIDTH)	45
CD TENSILE (LBS/IN WIDTH)	23
APPLICABLE STANDARDS*	-

For light- to medium-weight packaging applications such as inner carton sealing or palletized loads.

WP 100



ECONOMY GRADE
REINFORCED KRAFT PAPER
(MD) H110/(CD) G150 FIBERGLASS
WATER ACTIVATED ADHESIVE

MD TENSILE (LBS/IN WIDTH)	55
CD TENSILE (LBS/IN WIDTH)	25
TOP SHEET (LBS)	23
BOTTOM SHEET (LBS)	23
MD PATTERN	1-1-1-1-1
MD SPACING (IN)	5/8
CD SPACING (IN)	1.25
APPLICABLE STANDARDS*	-

For sealing light- to medium-weight cartons up to 25 lbs with normal exposure to handling, shipping and load stress.

WP 200



PRODUCTION GRADE
REINFORCED KRAFT PAPER
(MD) G75/(CD) G150 FIBERGLASS
WATER ACTIVATED ADHESIVE

MD TENSILE (LBS/IN WIDTH)	60
CD TENSILE (LBS/IN WIDTH)	27
TOP SHEET (LBS)	23
BOTTOM SHEET (LBS)	23
MD PATTERN	1-1-1-1-1
MD SPACING (IN)	1/2
CD SPACING (IN)	1.25
APPLICABLE STANDARDS*	-

For sealing medium-weight cartons up to 35 lbs in normal manufacturing and shipping environments; Ideal for single parcel shipments.

WP 300



HEAVY DUTY GRADE
REINFORCED KRAFT PAPER
(MD) G75/(CD) G150 FIBERGLASS
WATER ACTIVATED ADHESIVE

MD TENSILE (LBS/IN WIDTH)	75
CD TENSILE (LBS/IN WIDTH)	30
TOP SHEET (LBS)	23
BOTTOM SHEET (LBS)	23
MD PATTERN	2-1-1-1-1-2
MD SPACING (IN)	7/16
CD SPACING (IN)	1.25
APPLICABLE STANDARDS*	-

For critical closure of heavy-weight cartons up to 45 lbs in all environments; Ideal for single parcel shipments.

WP 400



EXTRA HEAVY DUTY GRADE
REINFORCED KRAFT PAPER
(MD) G75/(CD) G150 FIBERGLASS
WATER ACTIVATED ADHESIVE

MD TENSILE (LBS/IN WIDTH)	80
CD TENSILE (LBS/IN WIDTH)	35
TOP SHEET (LBS)	23
BOTTOM SHEET (LBS)	30
MD PATTERN	2-2-1-1-2
MD SPACING (IN)	19/32
CD SPACING (IN)	0.75
APPLICABLE STANDARDS*	-

For sealing large, bulky or heavy content cartons over 50 lbs in moderate to severe handling environments; Ideal for single parcel shipments.

WP 250



PRODUCTION GRADE, CUSTOM PRINT
REINFORCED KRAFT PAPER
(MD) G75/(CD) G150 FIBERGLASS
WATER ACTIVATED ADHESIVE

MD TENSILE (LBS/IN WIDTH)	60
CD TENSILE (LBS/IN WIDTH)	27
TOP SHEET (LBS)	23
BOTTOM SHEET (LBS)	23
MD PATTERN	1-1-1-1-1
MD SPACING (IN)	1/2
CD SPACING (IN)	1.25
APPLICABLE STANDARDS*	-

For sealing medium-weight cartons up to 35 lbs in normal manufacturing and shipping environments; Ideal for single parcel shipments; Custom printed with logo or message for delivery of goods without pilferage.

STRAPPING TAPES

GS 490



ECONOMY GRADE
CAST BOPP FILM
SYNTHETIC HOT MELT ADHESIVE
FIBERGLASS REINFORCED

TENSILE (LBS/IN WIDTH)	100
ADHESION TO STAINLESS STEEL (OZ/IN WIDTH)	70
THICKNESS (MILS)	4.3
ELONGATION (%)	3.7
SERVICE TEMPERATURE RANGE (*F)	-10 - 150
APPLICABLE STANDARDS*	29, 32

For light duty strapping, packaging, bundling and palletizing applications.

GS 500



UTILITY GRADE
CAST BOPP FILM
SYNTHETIC HOT MELT ADHESIVE
FIBERGLASS REINFORCED

TENSILE (LBS/IN WIDTH)	150
ADHESION TO STAINLESS STEEL (OZ/IN WIDTH)	70
THICKNESS (MILS)	5
ELONGATION (%)	3.7
SERVICE TEMPERATURE RANGE (*F)	-10 - 150
APPLICABLE STANDARDS*	29, 32

For general purpose strapping, packaging, bundling and palletizing jobs.

GS 501



INDUSTRIAL GRADE
CAST BOPP FILM
SYNTHETIC HOT MELT ADHESIVE
FIBERGLASS REINFORCED

TENSILE (LBS/IN WIDTH)	175
ADHESION TO STAINLESS STEEL (OZ/IN WIDTH)	70
THICKNESS (MILS)	5.2
ELONGATION (%)	3.7
SERVICE TEMPERATURE RANGE (*F)	-10 - 150
APPLICABLE STANDARDS*	29, 32

For medium duty strapping, packaging, bundling and palletizing applications.

GS 521



HIGH PERFORMANCE GRADE
CAST BOPP FILM
SYNTHETIC HOT MELT ADHESIVE
FIBERGLASS REINFORCED

TENSILE (LBS/IN WIDTH)	300
ADHESION TO STAINLESS STEEL (OZ/IN WIDTH)	70
THICKNESS (MILS)	6.2
ELONGATION (%)	3.7
SERVICE TEMPERATURE RANGE (*F)	-10 - 150
APPLICABLE STANDARDS*	8, 29, 32

For heavy duty closing, strapping, packaging, bundling, unitizing, palletizing and L-Clip applications.

GS 531



PREMIUM GRADE
POLYESTER FILM (PET)
SYNTHETIC HOT MELT ADHESIVE
FIBERGLASS REINFORCED

TENSILE (LBS/IN WIDTH)	300
ADHESION TO STAINLESS STEEL (OZ/IN WIDTH)	70
THICKNESS (MILS)	6.7
ELONGATION (%)	3.7
SERVICE TEMPERATURE RANGE (*F)	-10 - 150
APPLICABLE STANDARDS*	8, 29, 32

For heavy duty, maximum security closing, strapping, packaging, protecting, bundling, reinforcing, sealing, unitizing, palletizing and L-Clip applications.

PS 748



UTILITY GRADE
TENSILIZED, MOPP FILM
EMULSION ACRYLIC ADHESIVE

TENSILE (LBS/IN WIDTH)	100
ADHESION TO STAINLESS STEEL (OZ/IN WIDTH)	34
THICKNESS (MILS)	2.8
ELONGATION (%)	30
SERVICE TEMPERATURE RANGE (*F)	0 - 250
APPLICABLE STANDARDS*	-

For light duty strapping, packaging, bundling and palletizing applications.

SOLVENT-BASED ACRYLIC TAPES

PP 802



PREMIUM PLUS GRADE
25 MICRON CAST BOPP FILM
SOLVENT-BASED ACRYLIC ADHESIVE

TENSILE (LBS/IN WIDTH)	22
ADHESION TO STAINLESS STEEL (OZ/IN WIDTH)	25
THICKNESS (MILS)	2.0
ELONGATION (%)	140
APPLICATION TEMPERATURE RANGE (°F)	20 - 110
SERVICE TEMPERATURE RANGE (°F)	-20 - 180
APPLICABLE STANDARDS*	21

For light duty sealing, repairing and bundling of corrugated cartons, paper and film containers; Use with a hand-held or machine dispenser.

PP 803



PREMIUM PLUS GRADE
30 MICRON CAST BOPP FILM
SOLVENT-BASED ACRYLIC ADHESIVE

TENSILE (LBS/IN WIDTH)	25
ADHESION TO STAINLESS STEEL (OZ/IN WIDTH)	25
THICKNESS (MILS)	2.2
ELONGATION (%)	150
APPLICATION TEMPERATURE RANGE (°F)	20 - 110
SERVICE TEMPERATURE RANGE (°F)	-20 - 180
APPLICABLE STANDARDS*	21

For overlamination, label protection and carton closure applications that demand 100 percent clarity; For use in a broad range of temperatures.

PP 810



PREMIUM GRADE
25 MICRON CAST BOPP FILM
SOLVENT-BASED ACRYLIC ADHESIVE

TENSILE (LBS/IN WIDTH)	22
ADHESION TO STAINLESS STEEL (OZ/IN WIDTH)	22
THICKNESS (MILS)	1.8
ELONGATION (%)	140
APPLICATION TEMPERATURE RANGE (°F)	20 - 110
SERVICE TEMPERATURE RANGE (°F)	-20 - 180
APPLICABLE STANDARDS*	21

For sealing light- to medium-weight cartons in everyday shipping and handling environments; Also used for bundling and securing loose objects; Can also be used to repair corrugated cartons, paper and film containers; Use with a hand-held dispenser.

PP 815



HEAVY DUTY GRADE
40 MICRON CAST BOPP FILM
SOLVENT-BASED ACRYLIC ADHESIVE

TENSILE (LBS/IN WIDTH)	26
ADHESION TO STAINLESS STEEL (OZ/IN WIDTH)	28
THICKNESS (MILS)	2.6
ELONGATION (%)	140
APPLICATION TEMPERATURE RANGE (°F)	20 - 110
SERVICE TEMPERATURE RANGE (°F)	-20 - 180
APPLICABLE STANDARDS*	21

For critical sealing and repairing of corrugated containers in hot and cold environments; Use with a hand-held dispenser.



SD 935 DISPENSER & PP SERIES

OFFICE & SPECIALTY TAPES

CT 109



GENERAL PURPOSE GRADE
CELLULOSE FILM
STATIC-FREE
RUBBER-BASED ADHESIVE

TENSILE (LBS/IN WIDTH)	22
ADHESION TO STAINLESS STEEL (OZ/IN WIDTH)	35
THICKNESS (MILS)	1.7
ELONGATION (%)	18
MAXIMUM SERVICE TEMPERATURE (°F)	265
APPLICABLE STANDARDS*	19

For sealing, packaging and mending applications, particularly involving hard-to-stick-to surfaces; Also used for splicing applications.

VF 719



ECONOMY GRADE
PRINTABLE UPVC FILM
NATURAL RUBBER ADHESIVE

TENSILE (LBS/IN WIDTH)	23
ADHESION TO STAINLESS STEEL (OZ/IN WIDTH)	13
THICKNESS (MILS)	1.9
ELONGATION (%)	60
MAXIMUM SERVICE TEMPERATURE (°F)	150
APPLICABLE STANDARDS*	23

For use with a hand dispenser to seal cartons with recycled fiber content, heavy ink coverage or rough surfaces.

AP 15



SHIPPING GRADE
25 MICRON CAST BOPP FILM
EMULSION ACRYLIC ADHESIVE

TENSILE (LBS/IN WIDTH)	20
ADHESION TO STAINLESS STEEL (OZ/IN WIDTH)	19
THICKNESS (MILS)	1.6
ELONGATION (%)	150
APPLICATION TEMPERATURE RANGE (°F)	20 - 110
SERVICE TEMPERATURE RANGE (°F)	-20 - 180
APPLICABLE STANDARDS*	29, 32

For protecting shipping labels and other printed surfaces against weather and handling.



JLAR



SPECIALTY GRADE
BOPP FILM
SOLVENT-BASED ACRYLIC ADHESIVE

TENSILE (LBS/IN WIDTH)	24
ADHESION TO STAINLESS STEEL (OZ/IN WIDTH)	30
THICKNESS (MILS)	2.6
ELONGATION (%)	140
APPLICATION TEMPERATURE RANGE (°F)	20 - 110
SERVICE TEMPERATURE RANGE (°F)	-20 - 180
APPLICABLE STANDARDS*	-

For overlamination and label protection applications that demand a clear to the core tape; Also used for light duty packaging, paper repair and mending, and holding applications; Recommended for use with counter and desk dispensers.

PP 808



GENERAL PURPOSE GRADE
UPVC FILM
NATURAL RUBBER ADHESIVE

TENSILE (LBS/IN WIDTH)	27
ADHESION TO STAINLESS STEEL (OZ/IN WIDTH)	24
THICKNESS (MILS)	2.1
ELONGATION (%)	60
MAXIMUM SERVICE TEMPERATURE (°F)	150
APPLICABLE STANDARDS*	-

For lightweight bag sealing, banding, bundling and packaging applications; Also used for color-coding tasks.

PP 807



PREMIUM GRADE
25 MICRON CAST BOPP FILM
SOLVENT-BASED ACRYLIC ADHESIVE

TENSILE (LBS/IN WIDTH)	20
ADHESION TO STAINLESS STEEL (OZ/IN WIDTH)	23
THICKNESS (MILS)	1.8
ELONGATION (%)	140
APPLICATION TEMPERATURE RANGE (°F)	20 - 110
SERVICE TEMPERATURE RANGE (°F)	-20 - 180
APPLICABLE STANDARDS*	-

For moisture-proof protection of labels and handling instructions; Also used for industrial and production laminating, joining, covering and protecting jobs.

ShurSEAL® PACKAGING SOLUTIONS

At Shurtape, we've taken a holistic approach to case sealing and developed strategic partnerships to offer packaging tapes and tape application technologies that together deliver better carton seals and packaging line efficiency. The result is ShurSEAL Packaging Solutions, manual and automated case sealing systems that combine HP Series packaging tape with PrimeLoc™ tape applicators to enhance your case sealing operations.

- Reduce material waste
- Reduce downtime
- Increase safety
- Increase content security
- Reduce maintenance costs

Learn more at
ShurSEALsecure.com

FOLDED-EDGE® TECHNOLOGY

A patented feature on the tape applicator that folds the edges of the tape as it's applied, reinforcing seal strength and creating a ready to open seal that doesn't require a knife.

- More reliable tape application results in better production throughput
- Increased seal strength at major flaps for added security
- Easy, no-knife opening reduces risk of product damage and worker injury



7000 SERIES



7000 Series Tape Applicators feature

- Easy retrofit into existing erectors and sealers
- Stainless steel wash-down ready construction
- Open design for easy threading
- Front and rear tape tab adjustments
- Good to the Core® tape for less material waste
- Consistent seals at speeds up to 200 fpm
- Multiple wipe-down points for full use of the tape's adhesive
- Available with PrimeAlert™ Tape Monitoring System

8000 SERIES (QUICK CHANGE)



The **8000 Series Quick Change Sealing System** is uniquely engineered to tackle the downtime associated with slow tape roll changeovers, while offering all the benefits of the 7000 Series Applicators.

- Tape roll changes in less than 10 seconds
- Interchangeable inserts allow for easy offline threading
- Lightweight inserts reduce operator strain and lifting
- Retrofits to existing erectors and sealers
- Available with PrimeAlert™ Tape Monitoring System

Folded-Edge Hand Dispensers



The All New Folded-Edge Hand Dispensers feature

- Improved wipe-down force for tamper-evident seals
- Retractable/pivoting safety blade
- Visible tape length indicators for tab length control
- Visible markers for single-strip, straight taping guidance
- Durable, heavy duty design for long-lasting performance
- Available in 2-inch (FE-2) and 3-inch (FE-3) models

FlexPack Taping System



The **All New FlexPack Taping System** is designed to enhance efficiency and organization in end-of-line packaging operations. An excellent 5S addition, this stationary solution provides all the benefits of our Folded-Edge Hand Dispensers, plus:

- Interchangeable inserts allow for easy offline threading
- Wall mount or table-top mount via hard mount or c-clamp
- Utilizes machine length tape rolls

MANUAL APPLICATORS

**FT 36**

**ALL NEW - PATENTED
PISTOL-GRIP
FILAMENT TAPE DISPENSER
18, 24, & 36 MM WIDTH USE***

For manual packaging, L-clipping, strapping, bundling and palletizing applications.

RECOMMENDED PRODUCTS
GS Series, PS Series

*Available in 48 MM and 72 MM upon request. Contact your Shurtape Sales Representative for more information.

**FT 36 DISPENSER &
GS SERIES**

SD 932

**STANDARD GRADE
PISTOL-GRIP TAPE DISPENSER
WITH ANTI-REVERSE BAR
2 IN WIDTH USE**

For manual carton sealing applications.

RECOMMENDED PRODUCTS

AP Series, HP Series, PP Series, FP 96, FP 97, FP 202, VF 719

SD 934 & SD 935

**PROFESSIONAL GRADE
PISTOL-GRIP TAPE DISPENSER
HIGH-IMPACT HANDLE, METAL FRAME
2 OR 3 IN WIDTH USE**

For manual carton sealing applications.

RECOMMENDED PRODUCTS

AP Series, HP Series, PP Series, FP 96, FP 97, FP 202, VF 719

SD 936

**DELUXE SILENCER
PISTOL-GRIP TAPE DISPENSER
HIGH-IMPACT HANDLE, METAL FRAME
2 IN WIDTH USE**

For manual carton sealing applications.

RECOMMENDED PRODUCTS

AP Series, HP Series, PP Series, FP 96, FP 97, FP 202, VF 719

MANUAL APPLICATORS

SD 999

**FILAMENT TAPE DISPENSER
METAL-FRAMED
1 IN WIDTH USE**

For manual closing, strapping, packaging, bundling and palletizing applications.

RECOMMENDED PRODUCTS
GS Series, PS Series

SD 930

**ECONOMY GRADE
CLAMSHELL TAPE DISPENSER
HIGH-IMPACT PLASTIC
2 IN WIDTH USE**

For manual packaging applications.

RECOMMENDED PRODUCTS

AP Series, HP Series, PP Series, FP 96, FP 97, FP 202, VF 719

SD 931

**LABEL PROTECTION DISPENSER
HIGH-IMPACT PLASTIC
4 IN WIDTH USE**

For use on packing lists, sales slips and labels.

RECOMMENDED PRODUCTS
AP 15, PP 807

AUTOMATED APPLICATOR

SD 937

**BAG-SEALING DISPENSER
METAL-FRAMED
9 MM WIDTH USE**

For single-stroke bag sealing applications.

RECOMMENDED PRODUCTS

PP 808

SD 955

**DESKTOP TAPE DISPENSER
HIGH-IMPACT PLASTIC
1 IN WIDTH USE**

For mending and light duty splicing tasks. Use with tapes with a 1-in or 3-in inside diameter core.

RECOMMENDED PRODUCTS

CT 109

SP 5000

**RETROFIT TAPE HEAD
POWDER COATED STEEL
LEFT OR RIGHT HAND
2 OR 3 IN MODELS AVAILABLE**

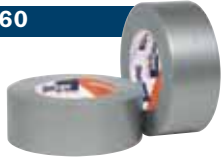
For industrial automated carton sealing applications; Retrofits into most common case erecting and sealing equipment.

RECOMMENDED PRODUCTS

HP Series and AP Series machine rolls

GENERAL PURPOSE DUCT TAPES

PC 460



SHURGRIP® UTILITY GRADE
GOOD CONFORMABILITY
NATURAL RUBBER ADHESIVE

TENSILE (LBS/IN WIDTH)	17
ADHESION TO STAINLESS STEEL (OZ/IN WIDTH)	60
THICKNESS (MILS)	6.0
ELONGATION (%)	14
SERVICE TEMPERATURE RANGE (°F)	40 - 200
APPLICABLE STANDARDS*	-

For non-critical, general purpose use in packaging, bundling, sealing, repairing, holding and waterproofing. Also used in the remediation/abatement industry as a gooseneck tape.



PC 589



SHURGRIP® LIGHT DUTY
GOOD SHEAR AND ADHESION
NATURAL RUBBER ADHESIVE

TENSILE (LBS/IN WIDTH)	18
ADHESION TO STAINLESS STEEL (OZ/IN WIDTH)	75
THICKNESS (MILS)	7.0
ELONGATION (%)	20
SERVICE TEMPERATURE RANGE (°F)	40 - 200
APPLICABLE STANDARDS*	34, 56

For light duty sealing, seaming, repairing, holding and waterproofing applications that require aggressive stick and superior hold; For temporary or permanent use.



For ultimate performance, choose Shurtape duct tapes with Polybonded CO-EX Technology®. The co-extrusion process melds polyethylene, cloth and adhesive in a single, high temperature step, resulting in a permanent, airtight bond. This seamless construction creates added strength and will not delaminate.

PC 593



SHURGRIP® MEDIUM DUTY
GOOD SHEAR AND ADHESION
NATURAL RUBBER ADHESIVE

TENSILE (LBS/IN WIDTH)	18
ADHESION TO STAINLESS STEEL (OZ/IN WIDTH)	85
THICKNESS (MILS)	8.0
ELONGATION (%)	20
SERVICE TEMPERATURE RANGE (°F)	40 - 200
APPLICABLE STANDARDS*	34, 56

For medium duty sealing, seaming, repairing, holding and waterproofing applications that require aggressive stick and superior hold; Also used in the restoration industry; For temporary or permanent use.



PC 599



SHURGRIP® HEAVY DUTY
EXCELLENT SHEAR AND ADHESION
NATURAL RUBBER ADHESIVE

TENSILE (LBS/IN WIDTH)	20
ADHESION TO STAINLESS STEEL (OZ/IN WIDTH)	90
THICKNESS (MILS)	9.0
ELONGATION (%)	20
SERVICE TEMPERATURE RANGE (°F)	35 - 200
APPLICABLE STANDARDS*	34, 56

For heavy duty sealing, seaming, repairing, holding and waterproofing applications that require aggressive stick and superior hold; Also used in the restoration industry; For temporary or permanent use.



PC 599

GENERAL PURPOSE DUCT TAPES

PC 590



ECONOMY GRADE
GOOD CONFORMABILITY
NATURAL RUBBER ADHESIVE

TENSILE (LBS/IN WIDTH)	20
ADHESION TO STAINLESS STEEL (OZ/IN WIDTH)	54
THICKNESS (MILS)	7.0
ELONGATION (%)	20
SERVICE TEMPERATURE RANGE (°F)	32 - 200
APPLICABLE STANDARDS*	-

For non-critical, general purpose use in packaging, bundling, sealing, seaming, repairing, holding and waterproofing; Also used in the remediation and restoration industries.



PC 595



GENERAL PURPOSE GRADE
GOOD CONFORMABILITY
NATURAL RUBBER ADHESIVE

TENSILE (LBS/IN WIDTH)	21
ADHESION TO STAINLESS STEEL (OZ/IN WIDTH)	55
THICKNESS (MILS)	8.0
ELONGATION (%)	20
SERVICE TEMPERATURE RANGE (°F)	32 - 200
APPLICABLE STANDARDS*	38, 56

For non-critical, general purpose packaging, bundling, sealing, seaming, repairing, holding and waterproofing; Also used in plumbing applications and in the remediation and restoration industries.



PC 600S



ALL-PURPOSE GRADE
CONFORMABLE
NATURAL RUBBER ADHESIVE

TENSILE (LBS/IN WIDTH)	22
ADHESION TO STAINLESS STEEL (OZ/IN WIDTH)	50
THICKNESS (MILS)	9.0
ELONGATION (%)	16
SERVICE TEMPERATURE RANGE (°F)	32 - 200
APPLICABLE STANDARDS*	5

For general purpose use in industrial, carpet, plumbing, HVAC, sealing, waterproofing, patching, remediation and restoration applications.



PC 600C



ALL-PURPOSE GRADE
CONFORMABLE
NATURAL RUBBER ADHESIVE

TENSILE (LBS/IN WIDTH)	22
ADHESION TO STAINLESS STEEL (OZ/IN WIDTH)	50
THICKNESS (MILS)	9.0
ELONGATION (%)	16
SERVICE TEMPERATURE RANGE (°F)	32 - 200
APPLICABLE STANDARDS*	-

For general purpose use in industrial, plumbing, carpet, color-coding and splicing applications, as well as home and general repair applications, particularly where a discreet fix is needed.



ALL-PURPOSE DUCT TAPES



PC 618S
PERFORMANCE GRADE
EXCELLENT CONFORMABILITY
NATURAL RUBBER ADHESIVE

TENSILE (LBS/IN WIDTH)	27
ADHESION TO STAINLESS STEEL (OZ/IN WIDTH)	55
THICKNESS (MILS)	10.0
ELONGATION (%)	17
SERVICE TEMPERATURE RANGE (°F)	40 - 200
APPLICABLE STANDARDS*	42, 56

For holding, securing, seaming, repairing, bundling, splicing, packaging and masking in HVAC, industrial, commercial, utilities, trucking and automotive applications; Can also be used as a condensation barrier in appliance assemblies.



PC 618C
PERFORMANCE GRADE
EXCELLENT CONFORMABILITY
NATURAL RUBBER ADHESIVE

TENSILE (LBS/IN WIDTH)	27
ADHESION TO STAINLESS STEEL (OZ/IN WIDTH)	55
THICKNESS (MILS)	10.0
ELONGATION (%)	17
SERVICE TEMPERATURE RANGE (°F)	40 - 200
APPLICABLE STANDARDS*	42, 56

For holding, securing, seaming, repairing, bundling, splicing, packaging and masking in HVAC, industrial, commercial, utilities, trucking and automotive applications; Can also be used as a condensation barrier in appliance assemblies.



PC 619
SPECIALTY GRADE
CONFORMABLE
NATURAL RUBBER ADHESIVE

TENSILE (LBS/IN WIDTH)	22
ADHESION TO STAINLESS STEEL (OZ/IN WIDTH)	50
THICKNESS (MILS)	9.0
ELONGATION (%)	16
SERVICE TEMPERATURE RANGE (°F)	40 - 200
APPLICABLE STANDARDS*	5

For general use, including color-coding, labeling, floor marking and book-binding; Also used for stage preparation in the motion picture and audio/visual industries; Can also be used for a variety of applications in the hospitality, motorsports and floral industries.



PC 618C



PC 626
SPECIALTY GRADE
LUSTERLESS CAMOUFLAGE
OFFICIAL ARMY ACU DIGITAL
NATURAL RUBBER ADHESIVE

TENSILE (LBS/IN WIDTH)	23
ADHESION TO STAINLESS STEEL (OZ/IN WIDTH)	48
THICKNESS (MILS)	10.0
ELONGATION (%)	20
SERVICE TEMPERATURE RANGE (°F)	50 - 200
APPLICABLE STANDARDS*	5

For sealing, waterproofing, holding, camouflaging, sound deadening, covering reflective surfaces and patching applications.



ABATEMENT DUCT TAPES



PC 608
CONTRACTOR GRADE ABATEMENT
EXCELLENT HOLD
BLENDED RUBBER ADHESIVE

TENSILE (LBS/IN WIDTH)	22
ADHESION TO STAINLESS STEEL (OZ/IN WIDTH)	68
THICKNESS (MILS)	9.0
ELONGATION (%)	16
SERVICE TEMPERATURE RANGE (°F)	25 - 200
APPLICABLE STANDARDS*	-

For use when building containments and a variety of other applications in remediation, restoration and abatement jobs; Can be used for mold and asbestos removal.



PC 629
INDUSTRIAL GRADE ABATEMENT
SUPERIOR HOLD
BLENDED RUBBER ADHESIVE

TENSILE (LBS/IN WIDTH)	27
ADHESION TO STAINLESS STEEL (OZ/IN WIDTH)	58
THICKNESS (MILS)	11.0
ELONGATION (%)	20
SERVICE TEMPERATURE RANGE (°F)	25 - 200
APPLICABLE STANDARDS*	-

For sealing walls, doors and windows in abatement applications; Ideal for use on rugged jobs in warm and cold climates, as well as dry and wet environments.



PC 610
PERFORMANCE GRADE ABATEMENT
SUPERIOR HOLD
BLENDED RUBBER ADHESIVE

TENSILE (LBS/IN WIDTH)	21
ADHESION TO STAINLESS STEEL (OZ/IN WIDTH)	56
THICKNESS (MILS)	10.0
ELONGATION (%)	18
SERVICE TEMPERATURE RANGE (°F)	25 - 200
APPLICABLE STANDARDS*	-

For sealing walls, doors and windows in abatement applications; Ideal for use on rugged jobs in warm and cold climates, as well as dry and wet environments.



CP 327 & PC 608

STUCCO DUCT TAPES

PC 622



PREMIUM GRADE, CLOTH DUCT CONFORMABLE WITH EXCELLENT HOLD NATURAL RUBBER ADHESIVE

TENSILE (LBS/IN WIDTH)	36
ADHESION TO STAINLESS STEEL (OZ/IN WIDTH)	60
THICKNESS (MILS)	12.5
ELONGATION (%)	14
SERVICE TEMPERATURE RANGE (°F)	50 - 200
APPLICABLE STANDARDS*	40, 56

For protecting window and door frames during stucco applications; Used in high performance motorsports; For heavy duty bundling, holding and splicing.



PC 668



SPECIALTY GRADE, CLOTH DUCT HOLDS STRONG SYNTHETIC/NATURAL RUBBER ADHESIVE

TENSILE (LBS/IN WIDTH)	27.5
ADHESION TO STAINLESS STEEL (OZ/IN WIDTH)	70
THICKNESS (MILS)	11.0
ELONGATION (%)	15
SERVICE TEMPERATURE RANGE (°F)	50 - 200
APPLICABLE STANDARDS*	-

For two- and three-step (scratch, brown and finish) stucco processes where the job requirements dictate the protective barrier be left in place for the entire application.



PC 667



SPECIALTY GRADE, CLOTH DUCT EASY TO TEAR BLENDED RUBBER ADHESIVE

TENSILE (LBS/IN WIDTH)	22
ADHESION TO STAINLESS STEEL (OZ/IN WIDTH)	50
THICKNESS (MILS)	9.0
ELONGATION (%)	15
SERVICE TEMPERATURE RANGE (°F)	50 - 200
APPLICABLE STANDARDS*	-

For protective masking of non-painted surfaces, including steel, vinyl, aluminum and anodized metals; Use in plastering, stucco, concrete, pool and tile applications.



PC 567



SPECIALTY GRADE, CLOTH DUCT CONFORMABLE TO MOST SURFACES BLENDED RUBBER ADHESIVE

TENSILE (LBS/IN WIDTH)	21
ADHESION TO STAINLESS STEEL (OZ/IN WIDTH)	46
THICKNESS (MILS)	8.0
ELONGATION (%)	14
SERVICE TEMPERATURE RANGE (°F)	50 - 200
APPLICABLE STANDARDS*	34, 56

For protecting surfaces when pressure washing and applying stucco.



See page 42 for Polyethylene Stucco Masking Tapes



PC 668

HVAC DUCT TAPES

PC 857



UL PRINTED COATED CLOTH HIGH STRENGTH AND HOLD SYNTHETIC RUBBER BLEND ADHESIVE

TENSILE (LBS/IN WIDTH)	27
ADHESION TO STAINLESS STEEL (OZ/IN WIDTH)	70
THICKNESS (MILS)	14.0
ELONGATION (%)	10
SERVICE TEMPERATURE RANGE (°F)	50 - 212
APPLICABLE STANDARDS*	43, 55, 56, 57

Used in the HVAC industry to seal, seam and join Class 1 Flex Duct.



PC 858CA



UL PRINTED COATED CLOTH HIGH STRENGTH AND HOLD SYNTHETIC RUBBER BLEND ADHESIVE CEC APPROVED

TENSILE (LBS/IN WIDTH)	27
ADHESION TO STAINLESS STEEL (OZ/IN WIDTH)	70
THICKNESS (MILS)	14.0
ELONGATION (%)	10
SERVICE TEMPERATURE RANGE (°F)	50 - 212
APPLICABLE STANDARDS*	43, 55, 56, 57

Used in the HVAC industry to seal, seam and join Class 1 Flex Duct; Approved for use by the California Energy Commission.



PC 609



PERFORMANCE GRADE EXCELLENT HOLD BLENDED RUBBER ADHESIVE

TENSILE (LBS/IN WIDTH)	22
ADHESION TO STAINLESS STEEL (OZ/IN WIDTH)	71
THICKNESS (MILS)	10.0
ELONGATION (%)	16
SERVICE TEMPERATURE RANGE (°F)	25 - 200
APPLICABLE STANDARDS*	34, 56

For use in the HVAC industry to repair thermal insulation and flexible ducts, and to seal metal ductwork; Used in the manufactured housing industry to seam bottom boards and for patching, seaming and sealing; Used for packaging, bundling, holding, wrapping and waterproofing; Also used for asbestos and mold remediation.



SF 682



SHURFLEX® PROFESSIONAL GRADE FLEXIBLE AND CONFORMABLE NATURAL RUBBER ADHESIVE

TENSILE (LBS/IN WIDTH)	25
ADHESION TO STAINLESS STEEL (OZ/IN WIDTH)	55
THICKNESS (MILS)	10.0
ELONGATION (%)	18
SERVICE TEMPERATURE RANGE (°F)	50 - 200
APPLICABLE STANDARDS*	35, 56

For use in the HVAC industry for airtight and moisture-free seaming, connecting, splicing, patching and sealing of sheet metal and flex duct, rigid ductboards, air vents, insulation, fibrous filter banks and pollution collection systems.



SF 683



SHURFLEX® PROFESSIONAL GRADE FLEXIBLE AND CONFORMABLE NATURAL RUBBER ADHESIVE

TENSILE (LBS/IN WIDTH)	25
ADHESION TO STAINLESS STEEL (OZ/IN WIDTH)	55
THICKNESS (MILS)	10.0
ELONGATION (%)	18
SERVICE TEMPERATURE RANGE (°F)	50 - 200
APPLICABLE STANDARDS*	35, 56

For use in the HVAC industry for airtight and moisture-free seaming, connecting, splicing, patching and sealing of sheet metal and flex duct, insulation, rigid ductboards, air vents and fiberboard.



MJ 100



PROFESSIONAL GRADE FIBERGLASS MESH WATER-BASED ACRYLIC ADHESIVE

TENSILE (LBS/IN WIDTH)	75.5
ADHESION TO STAINLESS STEEL (OZ/IN WIDTH)	8
THICKNESS (MILS)	9.0
ELONGATION (%)	3.83
SERVICE TEMPERATURE RANGE (°F)	-
APPLICABLE STANDARDS*	-

For reinforcing joints, seams and connections when paint-on mastic is used in HVAC applications; Can also be applied to drywall seams before the application of joint compound.

HEAVY DUTY DUCT TAPES

PC 621



PROFESSIONAL GRADE
EXCELLENT CONFORMABILITY
NATURAL RUBBER ADHESIVE

TENSILE (LBS/IN WIDTH)	27
ADHESION TO STAINLESS STEEL (OZ/IN WIDTH)	62
THICKNESS (MILS)	11.0
ELONGATION (%)	10
SERVICE TEMPERATURE RANGE (°F)	50 - 200
APPLICABLE STANDARDS*	38, 56

For demanding HVAC applications to hold, seal and seam sheet metal and flex duct, exhaust vents and pre-formed insulation; Can also be used in industrial applications for holding, splicing, protecting and packaging.



P- 670



HEAVY DUTY DUCT TAPE
POLYETHYLENE COATED BACKING
SYNTHETIC RUBBER ADHESIVE

TENSILE (LBS/IN WIDTH)	30
ADHESION TO STAINLESS STEEL (OZ/IN WIDTH)	95
THICKNESS (MILS)	11.5
ELONGATION (%)	3
SERVICE TEMPERATURE RANGE (°F)	50 - 200
APPLICABLE STANDARDS*	-

For sealing and seaming ductwork in the HVAC industry; Can also be used for protection, splicing, bundling, seaming and sealing applications that demand higher tensile strength and easy tear capabilities; For temporary and permanent uses in the auto industry.

PC 721



EXTREME HOLD PROFESSIONAL GRADE
EXCELLENT CONFORMABILITY
NATURAL RUBBER ADHESIVE

TENSILE (LBS/IN WIDTH)	32
ADHESION TO STAINLESS STEEL (OZ/IN WIDTH)	60
THICKNESS (MILS)	11.5
ELONGATION (%)	24
SERVICE TEMPERATURE RANGE (°F)	50 - 200
APPLICABLE STANDARDS*	38, 56

For demanding HVAC applications to hold, seal and seam sheet metal; Can also be used for heavy duty industrial applications like holding, bundling, splicing, protecting and packaging.



PC 657®



HEAVY DUTY PROFESSIONAL GRADE
EXCELLENT HOLD
NATURAL RUBBER ADHESIVE

TENSILE (LBS/IN WIDTH)	29
ADHESION TO STAINLESS STEEL (OZ/IN WIDTH)	104
THICKNESS (MILS)	14.5
ELONGATION (%)	11
SERVICE TEMPERATURE RANGE (°F)	40 - 200
APPLICABLE STANDARDS*	44, 56

For use in high performance motorsports applications, pre-manufactured housing and RV assembly, critical industrial applications and for protection during sandblasting and metal-peening operations.



PC 658



SUPER BOTTOM BOARD
SUPERIOR ADHESION AND HOLD
NATURAL RUBBER ADHESIVE

TENSILE (LBS/IN WIDTH)	30
ADHESION TO STAINLESS STEEL (OZ/IN WIDTH)	125
THICKNESS (MILS)	17.0
ELONGATION (%)	10
SERVICE TEMPERATURE RANGE (°F)	50 - 200
APPLICABLE STANDARDS*	41, 56

For seaming and sealing bottom board materials in pre-manufactured housing and RV assembly, set-up and maintenance; Can also be used to protect surfaces in metal-peening operations.



PC 745



T-REX® SUPER-TOUGH, ALL-WEATHER
QUICK STICK
NATURAL RUBBER ADHESIVE

TENSILE (LBS/IN WIDTH)	52
ADHESION TO STAINLESS STEEL (OZ/IN WIDTH)	100
THICKNESS (MILS)	17.0
ELONGATION (%)	10
SERVICE TEMPERATURE RANGE (°F)	32 - 200
APPLICABLE STANDARDS*	-

For use on rough or dirty surfaces; For heavy duty repairs that demand a ferociously strong hold; Can also be used as a bottom board tape in the manufactured housing industry.



SPECIALTY DUCT TAPES

PC 623



ECONOMICAL NUCLEAR GRADE
EXCELLENT HOLDING POWER
NATURAL RUBBER ADHESIVE
MEETS ASME NQA-1 GUIDELINES

TENSILE (LBS/IN WIDTH)	28
ADHESION TO STAINLESS STEEL (OZ/IN WIDTH)	58
THICKNESS (MILS)	11.5
ELONGATION (%)	12
SERVICE TEMPERATURE RANGE (°F)	50 - 200
APPLICABLE STANDARDS*	2, 3, 50

For a variety of purposes in the construction, operation and maintenance of nuclear power facilities; Can also be used for holding to stainless steel pipes, color-coding and sealing endcaps on stainless steel pipes.



PC 624



NUCLEAR GRADE
EXCELLENT HOLDING POWER
NATURAL RUBBER ADHESIVE
MEETS ASME NQA-1 GUIDELINES

TENSILE (LBS/IN WIDTH)	36
ADHESION TO STAINLESS STEEL (OZ/IN WIDTH)	60
THICKNESS (MILS)	13.0
ELONGATION (%)	14
SERVICE TEMPERATURE RANGE (°F)	50 - 200
APPLICABLE STANDARDS*	2, 3, 50

For a more robust variety of purposes in the construction, operation and maintenance of nuclear power facilities; Can also be used for holding to stainless steel pipes, color-coding and sealing endcaps on stainless steel pipes.



PC 625



MILITARY SPEC LUSTERLESS
EXCELLENT HOLDING POWER
NATURAL RUBBER ADHESIVE
ASTM D5486M TESTED

TENSILE (LBS/IN WIDTH)	45
ADHESION TO STAINLESS STEEL (OZ/IN WIDTH)	50
THICKNESS (MILS)	12.5
ELONGATION (%)	12
SERVICE TEMPERATURE RANGE (°F)	50 - 200
APPLICABLE STANDARDS*	12

For use as a premium, waterproof packaging tape that meets government specifications; Can also be used for moisture-proofing cartons, canisters and tubing.



T-REX®/PC 745

COATED CLOTH TAPES

P- 628



**PROFESSIONAL GRADE GAFFER'S
MATTE-FINISH BACKING
HIGH TENSILE AND HOLDING POWER
SYNTHETIC RUBBER ADHESIVE**

TENSILE (LBS/IN WIDTH)	50
ADHESION TO STAINLESS STEEL (OZ/IN WIDTH)	75
THICKNESS (MILS)	10.75
ELONGATION (%)	4
SERVICE TEMPERATURE RANGE (°F)	50 - 180
APPLICABLE STANDARDS*	-

For use in the convention, hospitality, exhibition and trade show industries, and for general use in the audio/visual, television, photography, theatrical and motion picture industries; Used for protection and book-binding, color-coding, labeling and stage marking; Also used in the HVAC industry.

P- 660



**PROFESSIONAL GRADE GAFFER'S
MATTE-FINISH BACKING
HIGH TENSILE AND HOLDING POWER
SYNTHETIC RUBBER ADHESIVE**

TENSILE (LBS/IN WIDTH)	50
ADHESION TO STAINLESS STEEL (OZ/IN WIDTH)	75
THICKNESS (MILS)	10.75
ELONGATION (%)	4
SERVICE TEMPERATURE RANGE (°F)	50 - 180
APPLICABLE STANDARDS*	-

For bundling or securing wires, cables and props in the audio/visual, television, photography, theatrical and motion picture industries; Also used for color-coding, labeling, marking and book-binding applications; Will fluoresce under black light.

P- 661



**GLOW-IN-THE-DARK GAFFER'S
WRITABLE/PRINTABLE
HIGH ADHESION AND TACK
SYNTHETIC RUBBER ADHESIVE**

TENSILE (LBS/IN WIDTH)	50
ADHESION TO STAINLESS STEEL (OZ/IN WIDTH)	80
THICKNESS (MILS)	13.0
ELONGATION (%)	4
SERVICE TEMPERATURE RANGE (°F)	50 - 180
APPLICABLE STANDARDS*	5, 17

Used for a multitude of applications, including safety marking, in the audio/visual, television, photography, theatrical and motion picture industries; Also used for labeling and marking various objects, such as: safety/critical equipment, exit/directional signage, tripping hazards, access handles, sports equipment and tools.



P- 665



**PROFESSIONAL GRADE GAFFER'S
MATTE-FINISH BACKING
HIGH ADHESION AND TACK
SYNTHETIC RUBBER ADHESIVE**

TENSILE (LBS/IN WIDTH)	50
ADHESION TO STAINLESS STEEL (OZ/IN WIDTH)	80
THICKNESS (MILS)	11.0
ELONGATION (%)	4
SERVICE TEMPERATURE RANGE (°F)	50 - 180
APPLICABLE STANDARDS*	20

For demanding applications that require clean removal in the audio/visual, television, photography, theatrical and motion picture industries, such as holding wiring, lighting and props.

P- 672



**PREMIUM GRADE GAFFER'S
LIGHT DUTY
MATTE-FINISH BACKING
SYNTHETIC RUBBER ADHESIVE**

TENSILE (LBS/IN WIDTH)	70
ADHESION TO STAINLESS STEEL (OZ/IN WIDTH)	77
THICKNESS (MILS)	12.0
ELONGATION (%)	6
SERVICE TEMPERATURE RANGE (°F)	50 - 180
APPLICABLE STANDARDS*	20

For sealing containers and protection from welding splatter; Can also be used for general holding, bundling and temporary repair applications.

P- 691



**PREMIUM GRADE GAFFER'S
MEDIUM DUTY
MATTE-FINISH BACKING
SYNTHETIC RUBBER ADHESIVE**

TENSILE (LBS/IN WIDTH)	70
ADHESION TO STAINLESS STEEL (OZ/IN WIDTH)	80
THICKNESS (MILS)	12.25
ELONGATION (%)	6
SERVICE TEMPERATURE RANGE (°F)	50 - 180
APPLICABLE STANDARDS*	20, 48

For sealing containers and rooms, abrasion protection, and general holding, bundling and repair applications; Meets water leachable requirements for detrimental elements (FI & Br <250PPM; S & C<500PPM) in accordance with MIL-STD-2041D.

P- 68



**PREMIUM GRADE GAFFER'S
HEAVY DUTY
MATTE-FINISH BACKING
SYNTHETIC RUBBER ADHESIVE**

TENSILE (LBS/IN WIDTH)	70
ADHESION TO STAINLESS STEEL (OZ/IN WIDTH)	83
THICKNESS (MILS)	12.5
ELONGATION (%)	6
SERVICE TEMPERATURE RANGE (°F)	50 - 180
APPLICABLE STANDARDS*	20

For book-binding, color-coding and gaffer's applications; For sealing containers and rooms, abrasion protection, and general holding, bundling and repair applications.



P- 665

ALUMINUM FOIL TAPES

AF 100



**2-MIL DEAD-SOFT ALUMINUM FOIL
FLEXIBLE AND EASY TO USE
ACRYLIC-BASED ADHESIVE
TRADITIONAL LINER**

TENSILE (LBS/IN WIDTH)	25
ADHESION TO STAINLESS STEEL (OZ/IN WIDTH)	70
THICKNESS WITHOUT LINER (MILS)	4.2
ELONGATION (%)	2
APPLICATION TEMPERATURE RANGE (°F)	-20 - 260
APPLICABLE STANDARDS*	46, 54, 55, 56, 57

For joining and sealing joints, connections and seams on rigid fiberglass ductboard and flexible air duct.



AF 100E



**2-MIL DEAD-SOFT ALUMINUM FOIL
FLEXIBLE AND EASY TO USE
ACRYLIC-BASED ADHESIVE
EASYPEEL® LINER**

TENSILE (LBS/IN WIDTH)	25
ADHESION TO STAINLESS STEEL (OZ/IN WIDTH)	70
THICKNESS WITHOUT LINER (MILS)	4.2
ELONGATION (%)	2
APPLICATION TEMPERATURE RANGE (°F)	-20 - 260
APPLICABLE STANDARDS*	46, 54, 55, 56, 57

For joining and sealing joints, connections and seams on rigid fiberglass ductboard and flexible air duct.



AF 914CT



**1.5-MIL ALUMINUM FOIL
SUPERIOR STABILITY
ACRYLIC-BASED ADHESIVE
LINERED**

TENSILE (LBS/IN WIDTH)	12
ADHESION TO STAINLESS STEEL (OZ/IN WIDTH)	64
THICKNESS WITHOUT LINER (MILS)	3.4
ELONGATION (%)	3
APPLICATION TEMPERATURE RANGE (°F)	-20 - 260
APPLICABLE STANDARDS*	34, 56

For joining and sealing aluminum-backed and fibrous insulation and metal ductwork in temperatures ranging from -20 F to 260 F; Also used to repair metal and sheet metal.



AF 975CT



**2-MIL ALUMINUM FOIL
SUPERIOR STABILITY
ACRYLIC-BASED ADHESIVE
LINERED**

TENSILE (LBS/IN WIDTH)	18
ADHESION TO STAINLESS STEEL (OZ/IN WIDTH)	64
THICKNESS WITHOUT LINER (MILS)	4.0
ELONGATION (%)	3
APPLICATION TEMPERATURE RANGE (°F)	-20 - 260
APPLICABLE STANDARDS*	34, 56

For use in temperatures ranging from -20 F to 260 F when joining and sealing aluminum-backed or fibrous insulation and metal ductwork; Can also be used when repairing metal and sheet metal.



SF 685



**PRINTED SHURMASTIC® FOIL
FORMS A PERMANENT BOND
BUTYL RUBBER ADHESIVE
LINERED**

TENSILE (LBS/IN WIDTH)	25
ADHESION TO STAINLESS STEEL (OZ/IN WIDTH)	255
THICKNESS (MILS)	17.0
ELONGATION (%)	560
SERVICE TEMPERATURE RANGE (°F)	-20 - 200
APPLICABLE STANDARDS*	45, 51, 53, 56

For indoor or outdoor use to seal Class 1 Flex Duct, sheet metal and duct wrap vapor barriers; Also approved for subgrade application on PVC-coated duct; Paintable with paint recommended for aluminum.



SF 686



**UL PRINTED SHURMASTIC® FOIL
INSTANT, WATER-RESISTANT GRIP
BUTYL RUBBER ADHESIVE
LINERED**

TENSILE (LBS/IN WIDTH)	23.8
ADHESION TO STAINLESS STEEL (OZ/IN WIDTH)	111
THICKNESS (MILS)	17.0
ELONGATION (%)	-
SERVICE TEMPERATURE RANGE (°F)	-20 - 220
APPLICABLE STANDARDS*	51, 53, 55, 56, 57

For airtight and moisture-free sealing of Class 1 Flex Duct, sheet metal and duct wrap vapor barriers; Also approved for subgrade application on PVC-coated duct; Paintable with paint recommended for aluminum.



ALUMINUM FOIL TAPES

AF 912



**1.5-MIL DEAD-SOFT ALUMINUM FOIL
SOLVENT-FREE
SYNTHETIC RUBBER ADHESIVE
LINERED**

TENSILE (LBS/IN WIDTH)	11
ADHESION TO STAINLESS STEEL (OZ/IN WIDTH)	90
THICKNESS WITHOUT LINER (MILS)	3.8
ELONGATION (%)	2
APPLICATION TEMPERATURE RANGE (°F)	32 - 230
APPLICABLE STANDARDS*	38, 56

For sealing and joining aluminum-backed duct wrap; Also used for temporary metal repair.

AF 973



**2-MIL DEAD-SOFT ALUMINUM FOIL
SOLVENT-FREE
SYNTHETIC RUBBER ADHESIVE
LINERED**

TENSILE (LBS/IN WIDTH)	15
ADHESION TO STAINLESS STEEL (OZ/IN WIDTH)	90
THICKNESS WITHOUT LINER (MILS)	4.4
ELONGATION (%)	2
APPLICATION TEMPERATURE RANGE (°F)	32 - 230
APPLICABLE STANDARDS*	36, 56

For sealing and joining aluminum-backed duct wrap, creating water and vapor barriers, and for temporary metal repair.

AF 982



**FOIL/SCRIM/KRAFT (FSK)
SOLVENT-FREE
SYNTHETIC RUBBER ADHESIVE
LINERED**

TENSILE (LBS/IN WIDTH)	40
ADHESION TO STAINLESS STEEL (OZ/IN WIDTH)	60
THICKNESS WITHOUT LINER (MILS)	6.6
ELONGATION (%)	1
APPLICATION TEMPERATURE RANGE (°F)	32 - 230
APPLICABLE STANDARDS*	40, 56

For maximum-strength sealing, seaming and joining scrim-reinforced pipe and duct insulation in all weather conditions.

DC 181



**UL PRINTED BOPP FILM
EXCELLENT CONFORMABILITY
ACRYLIC ADHESIVE**

TENSILE (LBS/IN WIDTH)	31
ADHESION TO STAINLESS STEEL (OZ/IN WIDTH)	38
THICKNESS (MILS)	2.7
ELONGATION (%)	200
SERVICE TEMPERATURE RANGE (°F)	-10 - 210
APPLICABLE STANDARDS*	46, 55, 56, 57

For use on Class 1 Flex Duct for connecting, joining, sealing and patching flexible air ductwork.



FF 100



**UL PRINTED BOPP FILM
EXCELLENT CONFORMABILITY
WATER-BASED ACRYLIC ADHESIVE**

TENSILE (LBS/IN WIDTH)	30
ADHESION TO STAINLESS STEEL (OZ/IN WIDTH)	50
THICKNESS (MILS)	3.0
ELONGATION (%)	150
SERVICE TEMPERATURE RANGE (°F)	-14 - 176
APPLICABLE STANDARDS*	34, 55, 56, 57

For seaming and sealing reflective insulation; Can also be used to seal reflective insulation used as a radiant barrier inside an attic, crawlspace, side wall or other area inside a home or building; Delivers a permanent, airtight seal for the life of the system.



FF 100

COMPOSITE TAPES

AF 984CT



**FOIL/SCRIM/KRAFT (FSK)
SUPERIOR STABILITY
ACRYLIC-BASED ADHESIVE
LINERED**

TENSILE (LBS/IN WIDTH)	34
ADHESION TO STAINLESS STEEL (OZ/IN WIDTH)	64
THICKNESS WITHOUT LINER (MILS)	7.4
ELONGATION (%)	3
APPLICATION TEMPERATURE RANGE (°F)	-20 - 260
APPLICABLE STANDARDS*	37, 56

For sealing seams in scrim-reinforced duct insulation.



COLD TEMP

AF 990CT



**ALL SERVICE JACKET (ASJ)
SUPERIOR STABILITY
ACRYLIC-BASED ADHESIVE
LINERED**

TENSILE (LBS/IN WIDTH)	50
ADHESION TO STAINLESS STEEL (OZ/IN WIDTH)	80
THICKNESS WITHOUT LINER (MILS)	8.3
ELONGATION (%)	6.7
APPLICATION TEMPERATURE RANGE (°F)	-20 - 260
APPLICABLE STANDARDS*	39, 56

For use in cold and dual temperature systems to seal, seam and join scrim-reinforced pipe and duct insulation.



COLD TEMP

AF 995CT



**ALL SERVICE JACKET+ (ASJ+)
SUPERIOR STABILITY
ACRYLIC-BASED ADHESIVE
LINERED**

TENSILE (LBS/IN WIDTH)	50
ADHESION TO STAINLESS STEEL (OZ/IN WIDTH)	80
THICKNESS WITHOUT LINER (MILS)	8.3
ELONGATION (%)	6.7
APPLICATION TEMPERATURE RANGE (°F)	-20 - 260
APPLICABLE STANDARDS*	56

For permanently sealing butt joints on ductboard and pipe insulation wrapped with ASJ+ faced backing in temperatures ranging from -20 F to 260 F.



COLD TEMP

MB 100



**WHITE METALIZED POLYPROPYLENE
PERMANENT BOND
ACRYLIC ADHESIVE
LINERED**

TENSILE (LBS/IN WIDTH)	26
ADHESION TO STAINLESS STEEL (OZ/IN WIDTH)	37
THICKNESS WITHOUT LINER (MILS)	6.9
ELONGATION (%)	5
APPLICATION TEMPERATURE RANGE (°F)	-20 - 220
APPLICABLE STANDARDS*	56

For seaming and sealing VR-R plus insulation backings; Offers a seamless match when sealing, seaming and joining metal building insulation.



COLD TEMP

MB 200



**WHITE METALIZED POLYPROPYLENE
PERMANENT BOND
ACRYLIC ADHESIVE
LINERED**

TENSILE (LBS/IN WIDTH)	37
ADHESION TO STAINLESS STEEL (OZ/IN WIDTH)	64
THICKNESS WITHOUT LINER (MILS)	6.7
ELONGATION (%)	5
APPLICATION TEMPERATURE RANGE (°F)	-20 - 220
APPLICABLE STANDARDS*	56

For medium duty seaming and sealing White Metalized Polypropylene insulation backings; Offers a seamless match when sealing, seaming and joining metal building insulation.



COLD TEMP

MB 300



**WHITE METALIZED POLYPROPYLENE
PERMANENT BOND
ACRYLIC ADHESIVE
LINERED**

TENSILE (LBS/IN WIDTH)	41
ADHESION TO STAINLESS STEEL (OZ/IN WIDTH)	64
THICKNESS WITHOUT LINER (MILS)	8.3
ELONGATION (%)	4
APPLICATION TEMPERATURE RANGE (°F)	-20 - 220
APPLICABLE STANDARDS*	56

For heavy duty seaming and sealing White Metalized Polypropylene insulation backings; Offers a seamless match when sealing, seaming and joining metal building insulation.



COLD TEMP

MASKING & PAPER TAPES

PACKAGING SOLUTIONS

CLOTH & DUCT TAPES

FOIL, FILM & FOAM TAPES

DOUBLE-COATED TAPES

ELECTRICAL TAPES

EV 57B & EV 57C



**GENERAL PURPOSE GRADE
UL LISTED ELECTRICAL
CONFORMABLE AND HAND-TEARABLE
PVC FILM**

TENSILE (LBS/IN WIDTH)	16
ADHESION TO STAINLESS STEEL (OZ/IN WIDTH)	24
THICKNESS (MILS)	7.0
ELONGATION (%)	250
SERVICE TEMPERATURE RANGE (°F)	32 - 176
APPLICABLE STANDARDS*	27, 57

For use in a variety of indoor/outdoor mechanical and electrical applications, including color-coding and phasing tasks.



LISTED UV RESISTANT WATERPROOF

EV 77B & EV 77C



**PROFESSIONAL GRADE
UL LISTED ELECTRICAL
HIGH TENSILE
PVC FILM**

TENSILE (LBS/IN WIDTH)	20
ADHESION TO STAINLESS STEEL (OZ/IN WIDTH)	28
THICKNESS (MILS)	7.0
ELONGATION (%)	300
SERVICE TEMPERATURE RANGE (°F)	0 - 220
APPLICABLE STANDARDS*	27, 57

For all-weather insulating and splicing applications, jacketing on high voltage splices and repairs, and color-coding and phasing tasks.



LISTED UV RESISTANT ALL-WEATHER

EV 97B



**PREMIUM GRADE
UL LISTED ELECTRICAL
HIGH TENSILE
PVC FILM**

TENSILE (LBS/IN WIDTH)	26
ADHESION TO STAINLESS STEEL (OZ/IN WIDTH)	28
THICKNESS (MILS)	8.5
ELONGATION (%)	300
SERVICE TEMPERATURE RANGE (°F)	0 - 220
APPLICABLE STANDARDS*	27, 57

For primary insulation of electrical splices up to 600 V; Also used as a jacketing on high voltage splices and repairs; Can be used when wrapping wire harnesses and cables.



LISTED UV RESISTANT ALL-WEATHER



EV 77B

LR 117



**HIGH VOLTAGE
HIGH ELONGATION
LINERLESS EPR**

TENSILE (PSI)	400
ADHESION TO STAINLESS STEEL (OZ/IN WIDTH)	-
THICKNESS (MILS)	30.0
ELONGATION (%)	760
CONTINUOUS OPERATING TEMPERATURE MAX (°F)	194
APPLICABLE STANDARDS*	6, 7, 14

For insulating splices and terminations up to 69,000 V; Also used for insulating and protecting bus bars up to 35,000 V; Can be used to seal electrical splices from moisture; Also for jacketing for applications greater than 69,000 V; Compatible with all extruded dielectric cable insulations.



UV RESISTANT ALL-WEATHER

POLYETHYLENE/PVC FILM TAPES

BT 100



**GENERAL PURPOSE BARRICADE
2-IN LETTERS ARE EASY TO READ
RESISTS SAGGING
ADHESIVE-FREE**

THICKNESS (MILS)	2 - 3
APPLICABLE STANDARDS*	-

For marking restricted areas and managing access to work sites by professionals in the safety, construction, utilities, hardware and other industries.

VP 410



**GENERAL PURPOSE GRADE
LINE SET
SPVC FILM**

TENSILE (LBS/IN WIDTH)	13
ADHESION TO STAINLESS STEEL (OZ/IN WIDTH)	20
THICKNESS (MILS)	5.25
ELONGATION (%)	200
SERVICE TEMPERATURE RANGE (°F)	20 - 140
APPLICABLE STANDARDS*	22

For floor, lane and aisle marking, color-coding and identification applications; Also used in the HVAC industry to wrap line sets, seam Rubatex and Armaflex, and insulate air ducts and underground pipes; Meets OSHA color-coding requirements.



VP 415



**GENERAL PURPOSE GRADE
WARNING STRIPE
SPVC FILM**

TENSILE (LBS/IN WIDTH)	15
ADHESION TO STAINLESS STEEL (OZ/IN WIDTH)	12
THICKNESS (MILS)	6.6
ELONGATION (%)	200
SERVICE TEMPERATURE RANGE (°F)	20 - 140
APPLICABLE STANDARDS*	22

For lane marking and identification of safety zones and hazard areas; Resistant to abrasion, UV light, acid, alkalis, oils, moisture, humidity and corrosion; Meets OSHA color-coding requirements.



PE 333



**POLYETHYLENE FILM
SERRATED OR STRAIGHT EDGE
MAINTAINS A WATERTIGHT SEAL
SYNTHETIC RUBBER ADHESIVE**

TENSILE (LBS/IN WIDTH)	19
ADHESION TO STAINLESS STEEL (OZ/IN WIDTH)	70
THICKNESS (MILS)	7.0
ELONGATION (%)	80
SERVICE TEMPERATURE RANGE (°F)	32 - 160
APPLICABLE STANDARDS*	-

For masking surfaces, such as windows and doors, during stucco application and painting; When UV resistance is not required; Also for masking curved surfaces; Used for seaming under slab vapor barriers; Also used in the abatement, restoration and remodeling industries to hold poly-sheeting when building containments.

PE 444



**POLYETHYLENE FILM
MAINTAINS A WATERTIGHT SEAL
SYNTHETIC RUBBER ADHESIVE**

TENSILE (LBS/IN WIDTH)	19
ADHESION TO STAINLESS STEEL (OZ/IN WIDTH)	80
THICKNESS (MILS)	7.0
ELONGATION (%)	76
SERVICE TEMPERATURE RANGE (°F)	32 - 160
APPLICABLE STANDARDS*	-

For masking surfaces, such as windows and doors, during stucco application and painting; Delivers residue-free removal for a variety of applications.



PE 555



**POLYETHYLENE FILM
EXCELLENT TEARABILITY
SYNTHETIC RUBBER ADHESIVE**

TENSILE (LBS/IN WIDTH)	27
ADHESION TO STAINLESS STEEL (OZ/IN WIDTH)	92
THICKNESS (MILS)	9.0
ELONGATION (%)	94
SERVICE TEMPERATURE RANGE (°F)	32 - 160
APPLICABLE STANDARDS*	-

For masking surfaces during stucco application and painting; Can also be used for surface protection, color-coding, splicing and seaming on pipe-fitting covers; Delivers residue-free removal for a variety of applications.



See page 30 for Stucco Duct Tapes

MASKING & PAPER TAPES

PACKAGING SOLUTIONS

CLOTH & DUCT TAPES

FOIL, FILM & FOAM TAPES

DOUBLE-COATED TAPES

SPECIALTY TAPES

PE 100



**FLOORMATE®
LOW ADHESION
ACRYLIC-BASED ADHESIVE**

TENSILE (LBS/IN WIDTH)	11
ADHESION TO STAINLESS STEEL (OZ/IN WIDTH)	15
THICKNESS (MILS)	4.6
ELONGATION (%)	500
MAXIMUM SERVICE TEMPERATURE (°F)	160
APPLICABLE STANDARDS*	-

For temporary use on properly prepared and cured wood floors; Also used as a gym floor marking tape for creating temporary lines and boundaries; Can also be used on other hard flooring surfaces, including sheet vinyl, wood laminates, engineered hardwood, tile, marble and granite.

RT 700



**T-REX® CLEAR REPAIR
HAND-TEARABLE
ALL-WEATHER
SOLVENT ACRYLIC-BASED ADHESIVE**

TENSILE (LBS/IN WIDTH)	23.5
ADHESION TO STAINLESS STEEL (OZ/IN WIDTH)	100
HOLDING POWER TO STEEL (MINUTES)	1,800+
THICKNESS (MILS)	6.8
ELONGATION (%)	430
SERVICE TEMPERATURE RANGE (°F)	-5 - 150
APPLICABLE STANDARDS*	-

For quick and discreet repairs to a variety of surfaces, including those that require a water-resistant seal; Can be applied to wet* or dry surfaces; Can also be applied to rough surfaces and at below freezing temperatures.



*Follow recommended usage instructions for best results in wet-stick applications.

IT 100



**GENERAL PURPOSE GRADE
FOAM PIPE WRAP INSULATION
ADHERES FIRMLY TO ALL METALS
ACRYLIC-BASED ADHESIVE**

TENSILE (LBS/IN WIDTH) (LONGITUDINAL)	6.0
ADHESION TO STAINLESS STEEL (OZ/IN WIDTH)	-
THICKNESS WITHOUT LINER (MILS)	118.1
ELONGATION (%) (MACHINE DIRECTION)	126
SERVICE TEMPERATURE RANGE (°F)	-20 - 180
APPLICABLE STANDARDS*	-

For hot and cold pipe insulation applications - cover hot pipes to prevent heat loss and cold pipes to prevent condensation drip; Thermal conductivity is 0.28 at 75 °F, in accordance with ASTM C-177.

PW 100



**GENERAL PURPOSE GRADE
PVC PIPE WRAP
CORROSION/MOISTURE RESISTANT
RUBBER-BASED ADHESIVE**

TENSILE (LBS/IN WIDTH)	25
ADHESION TO STAINLESS STEEL (OZ/IN WIDTH)	20
THICKNESS (MILS)	10.0
ELONGATION (%)	200
APPLICATION TEMPERATURE RANGE (°F)	14 - 176
SERVICE TEMPERATURE RANGE (°F)	32 - 104
APPLICABLE STANDARDS*	-

For corrosion protection of under and above ground metal and plastic pipe installations.

HW 300



**HOUSEWRAP/SHEATHING
HAND-TEARABLE
WATER-BASED ACRYLIC ADHESIVE
CCMC-CERTIFIED**

TENSILE (LBS/IN WIDTH)	30
ADHESION TO STAINLESS STEEL (OZ/IN WIDTH)	50
THICKNESS (MILS)	3.0
ELONGATION (%)	162
APPLICATION TEMPERATURE RANGE (°F)	14 - 176
APPLICABLE STANDARDS*	18, 34, 56

For sealing seams and joints on all types of housewrap, sheathing, insulation and vapor barrier materials used in residential and commercial construction applications.



LS 300



**UV-RESISTANT LINE SET
EASY TO UNWIND
ACRYLIC-BASED ADHESIVE**

TENSILE (LBS/IN WIDTH)	37
ADHESION TO STAINLESS STEEL (OZ/IN WIDTH)	35
THICKNESS (MILS)	2.85
ELONGATION (%)	180
SERVICE TEMPERATURE RANGE (°F)	-35 - 210
APPLICABLE STANDARDS*	-

For taping outdoor HVAC components.



DOUBLE-COATED PAPER TAPES



DF 63
GENERAL PURPOSE GRADE
CREPE PAPER
RUBBER-BASED ADHESIVE

TENSILE (LBS/IN WIDTH)	19
ADHESION TO STAINLESS STEEL (OZ/IN WIDTH)	25
THICKNESS WITHOUT LINER (MILS)	6.5
ELONGATION (%)	8
SERVICE TEMPERATURE RANGE (°F)	50 - 150
APPLICABLE STANDARDS*	24

For mounting, holding, splicing, tabbing and fastening a variety of substrates.



DF 65
GENERAL PURPOSE GRADE
FLAT PAPER
RUBBER-BASED ADHESIVE

TENSILE (LBS/IN WIDTH)	33
ADHESION TO STAINLESS STEEL (OZ/IN WIDTH)	65
THICKNESS WITHOUT LINER (MILS)	5.0
ELONGATION (%)	3
SERVICE TEMPERATURE RANGE (°F)	50 - 225
APPLICABLE STANDARDS*	25

For mounting, holding, splicing, tabbing and fastening applications that demand aggressive adhesion.



DT 200
PREMIUM PERFORMANCE GRADE
SOLVENT-BASED ACRYLIC ADHESIVE
NONWOVEN TISSUE

TENSILE (LBS/IN WIDTH)	4.6
ADHESION TO STAINLESS STEEL (OZ/IN WIDTH)	55
THICKNESS WITHOUT LINER (MILS)	4.5
ELONGATION (%)	3.5
SERVICE TEMPERATURE RANGE (°F)	-20 - 212
APPLICABLE STANDARDS*	-

For high-speed splicing in the corrugated cardboard production process in temperatures up to 400 F. Can also be used as a mounting and laminating system for irregularly shaped metals, foams, foils and nameplates; For manual applications.



GG 200
GOLF GRIP
RUBBER-BASED ADHESIVE
CREPE PAPER

TENSILE (LBS/IN WIDTH)	23
ADHESION TO STAINLESS STEEL (OZ/IN WIDTH)	50
THICKNESS WITHOUT LINER (MILS)	6.5
ELONGATION (%)	10
SERVICE TEMPERATURE RANGE (°F)	50 - 150
APPLICABLE STANDARDS*	-

For factory and clubhouse golf grip installation; Can also be used for mounting, holding, splicing, tabbing and fastening a variety of substrates when an aggressive, double-sided tape is required.



DS 154
PROFESSIONAL GRADE CONTAINMENT
EXCELLENT HOLD
FINE STRUCTURED CREPE (FSC)
SYNTHETIC RUBBER ADHESIVE

TENSILE (LBS/IN WIDTH)	21
ADHESION TO STAINLESS STEEL (OZ/IN WIDTH) (LS*)	60
ADHESION TO STAINLESS STEEL (OZ/IN WIDTH) (ES*)	27
THICKNESS WITHOUT LINER (MILS)	8.5
ELONGATION (%)	9
SERVICE TEMPERATURE RANGE (°F)	32 - 120
APPLICABLE STANDARDS*	-

For holding poly-sheeting and other protective materials when creating high-performance containment systems; Use for restoration, abatement and remodeling tasks such as painting, cleaning, sanding, mold remediation, asbestos removal and more.



*LS=LINER SIDE; *ES=EXPOSED SIDE



DS 154

DOUBLE-COATED FILM TAPES



DP 380
GENERAL PURPOSE GRADE
POLYESTER (PET) FILM
SOLVENT-BASED ACRYLIC ADHESIVE

TENSILE (LBS/IN WIDTH)	14.3
ADHESION TO STAINLESS STEEL (OZ/IN WIDTH)	60
THICKNESS WITHOUT LINER (MILS)	4.4
ELONGATION (%)	120
SERVICE TEMPERATURE RANGE (°F)	-20 - 257
APPLICABLE STANDARDS*	-

For mounting banners, light signs, window blinds, emblems and nameplates; Also used for long-term or permanent bonding and attachment applications, including POP displays and laminating materials.



DP 401
PROFESSIONAL GRADE
POLYESTER (PET) FILM
SYNTHETIC RUBBER ADHESIVE

TENSILE (LBS/IN WIDTH)	14
ADHESION TO STAINLESS STEEL (OZ/IN WIDTH) (LS*)	124
ADHESION TO STAINLESS STEEL (OZ/IN WIDTH) (ES*)	142
THICKNESS WITHOUT LINER (MILS)	4.7
ELONGATION (%)	120
SERVICE TEMPERATURE RANGE (°F)	32 - 150
APPLICABLE STANDARDS*	-

For polyethylene (PE) foam fabrication and lamination processes; Ideal for packaging applications that require cushioning, protection or stabilization of contents; Can also be used with die-cuts, gaskets, POP merchandising and shelf displays.

*LS=LINER SIDE; *ES=EXPOSED SIDE



DP 391
PROFESSIONAL GRADE
POLYESTER (PET) FILM
SYNTHETIC RUBBER ADHESIVE

TENSILE (LBS/IN WIDTH)	23
ADHESION TO STAINLESS STEEL (OZ/IN WIDTH)	82
THICKNESS WITHOUT LINER (MILS)	3.7
ELONGATION (%)	120
SERVICE TEMPERATURE RANGE (°F)	32 - 150
APPLICABLE STANDARDS*	-

For mounting, bonding and fastening a wide variety of substrates, including low surface energy plastics and coatings; Used for trim, profile and extrusion mounting; Can be used in non-direct UV exposure applications, such as vinyl and painted window frames, that demand clean removal; Also used for mounting indoor window kits.

DOUBLE-COATED CLOTH



DF 545
PREMIUM PERFORMANCE GRADE
POLYESTER/COTTON BLEND CLOTH
RUBBER-BASED ADHESIVE

TENSILE (LBS/IN WIDTH)	28
ADHESION TO STAINLESS STEEL (OZ/IN WIDTH)	52
THICKNESS WITHOUT LINER (MILS)	13.5
ELONGATION (%)	9
SERVICE TEMPERATURE RANGE (°F)	50 - 200
APPLICABLE STANDARDS*	5

For securing carpet and pad at convention centers, arenas and hotels; Also used for general purpose hanging applications in the construction and abatement industries; Can also be used for splicing applications.



DF 642
INDUSTRIAL GRADE
POLYESTER/COTTON BLEND CLOTH
SYNTHETIC RUBBER ADHESIVE

TENSILE (LBS/IN WIDTH)	32
ADHESION TO STAINLESS STEEL (OZ/IN WIDTH)	32
THICKNESS WITHOUT LINER (MILS)	12.0
ELONGATION (%)	8
SERVICE TEMPERATURE RANGE (°F)	50 - 225
APPLICABLE STANDARDS*	-

For carpet and pad installation at convention centers, arenas and hotels; Used for general purpose holding and mounting applications; Can also be used to hold signs and dispensers for POP merchandising.

TRANSFER ADHESIVE TAPES

TA 450



**GENERAL PURPOSE GRADE
RESISTS HUMIDITY, MOST SOLVENTS
ACRYLIC-BASED ADHESIVE**

ADHESION TO STAINLESS STEEL (OZ/IN WIDTH)	25
THICKNESS WITHOUT LINER (MILS)	1.6
SERVICE TEMPERATURE RANGE (°F)	-22 - 302
APPLICABLE STANDARDS*	-

For mounting, holding, joining and splicing various substrates, including paper, cardboard, textiles, plastics, leather, wood, glass and painted surfaces; For use on displays, POS, posters, etc.



TG 356



**PREMIUM PERFORMANCE GRADE
RESISTS HUMIDITY, MOST SOLVENTS
ACRYLIC-BASED ADHESIVE**

ADHESION TO STAINLESS STEEL (OZ/IN WIDTH)	32
THICKNESS WITHOUT LINER (MILS)	2.0
SERVICE TEMPERATURE RANGE (°F)	-60 - 250
APPLICABLE STANDARDS*	-

For mounting, holding, joining and splicing various substrates, including paper, cardboard, textiles, plastics, leather, wood, glass and painted surfaces; For use on displays, POS, posters, etc.; Use with an adhesive transfer gun to make almost any surface self-adhesive. Reverse wound on a 1-in I.D. core.



DISPENSER

SD 950



**ADHESIVE TRANSFER GUN
PISTOL-GRIP
EASY TO LOAD**

For use with reverse wound adhesive transfer tape to quickly and easily make almost any surface self-adhesive; For mounting, holding, joining and splicing paper, cardboard, plastics, wood, leather, glass and painted surfaces; Can also be used when gift wrapping; For use with 0.75 in maximum width rolls.

RECOMMENDED PRODUCTS
TG 356



**SD 950 DISPENSER &
TG 356**

SHURTAPE INNOVATIONS

New or reinvented products that stay **TRUE TO YOUR WORK**

CP 327

BLUE CONTAINMENT TAPE



Page 9

PC 608

POLY-HANGING DUCT TAPE



Page 29

SHURGRIP® SERIES

CO-EXTRUDED DUCT TAPES



Page 26

PC 745

T-REX® SUPER-TOUGH CLOTH TAPE



Page 32

FE-2 & FE-3

FOLDED-EDGE HAND DISPENSER



Page 21

FLEXPACK

TAPING SYSTEM



Page 21

FT 36

FILAMENT TAPE DISPENSER



Page 22

FF 100

REFLECTIVE INSULATION FILM TAPE



Page 39

MB SERIES

METAL BUILDING INSULATION TAPES



Page 40

EV SERIES

UL LISTED ELECTRICAL TAPES



Page 41

LR 117

LINERLESS RUBBER TAPE



Page 41

RT 700

T-REX® CLEAR REPAIR TAPE



Page 43